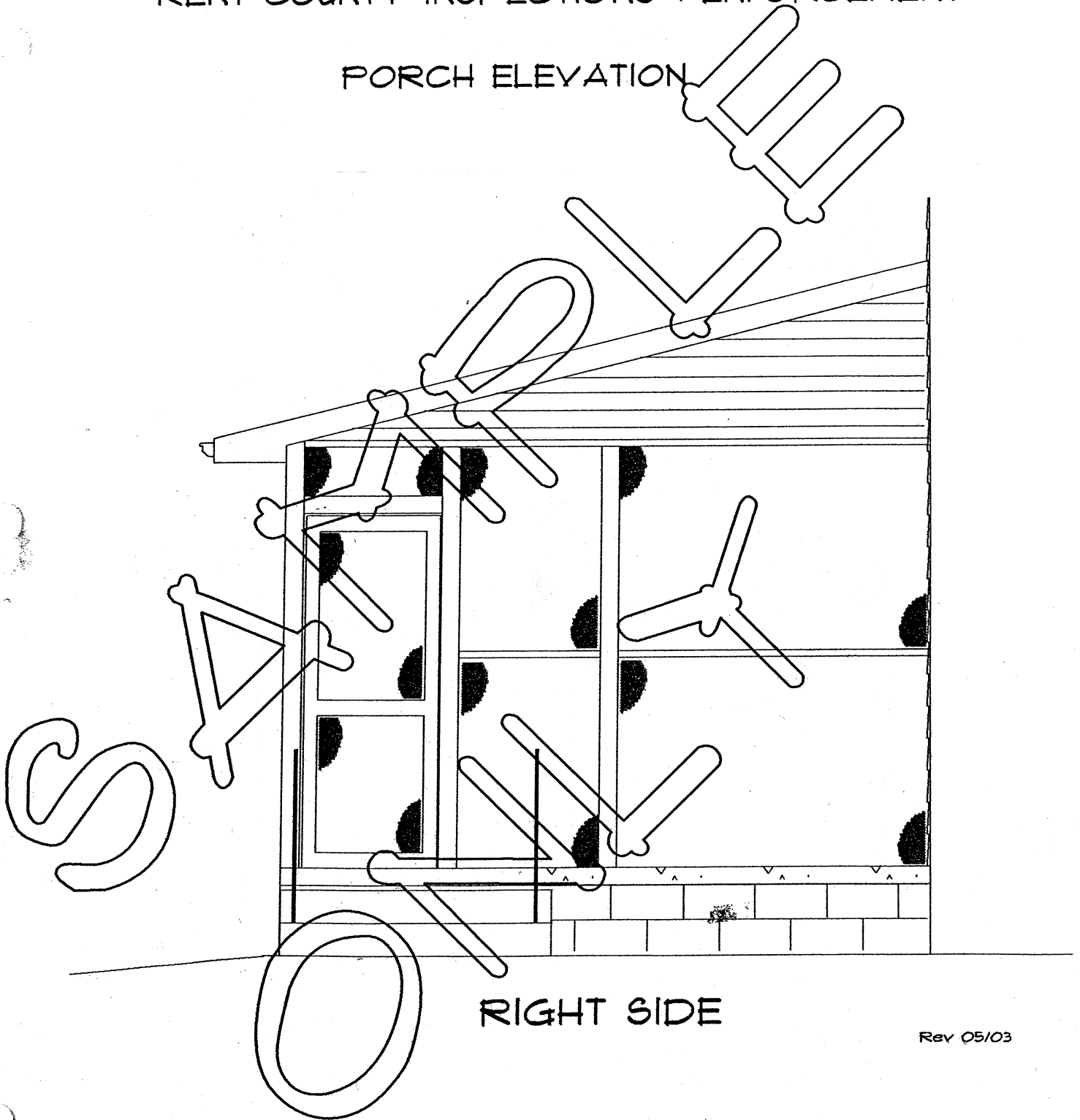


KENT COUNTY INSPECTIONS & ENFORCEMENT

PORCH ELEVATION

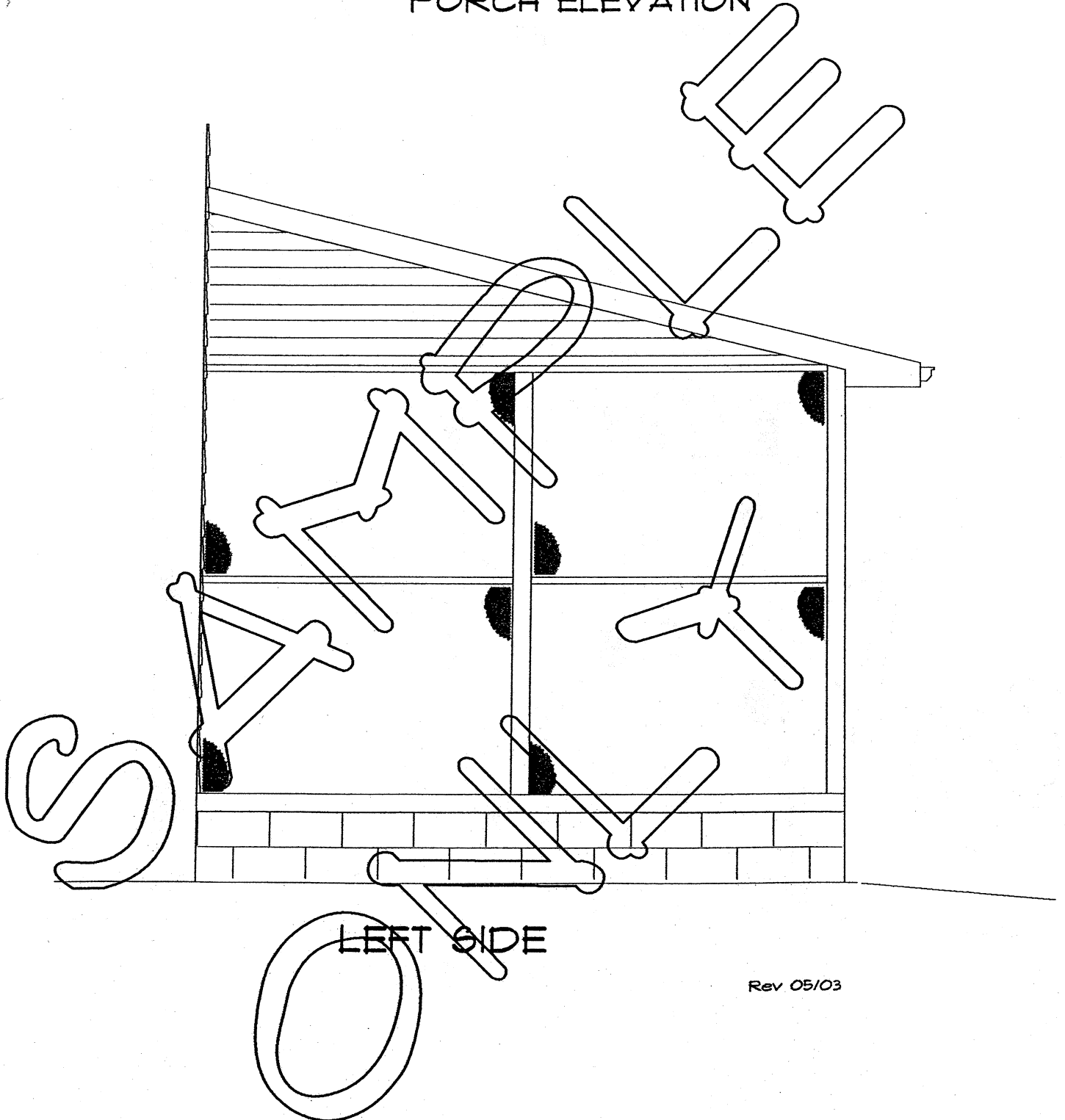


RIGHT SIDE

Rev 05/03

KENT COUNTY INSPECTIONS & ENFORCEMENT

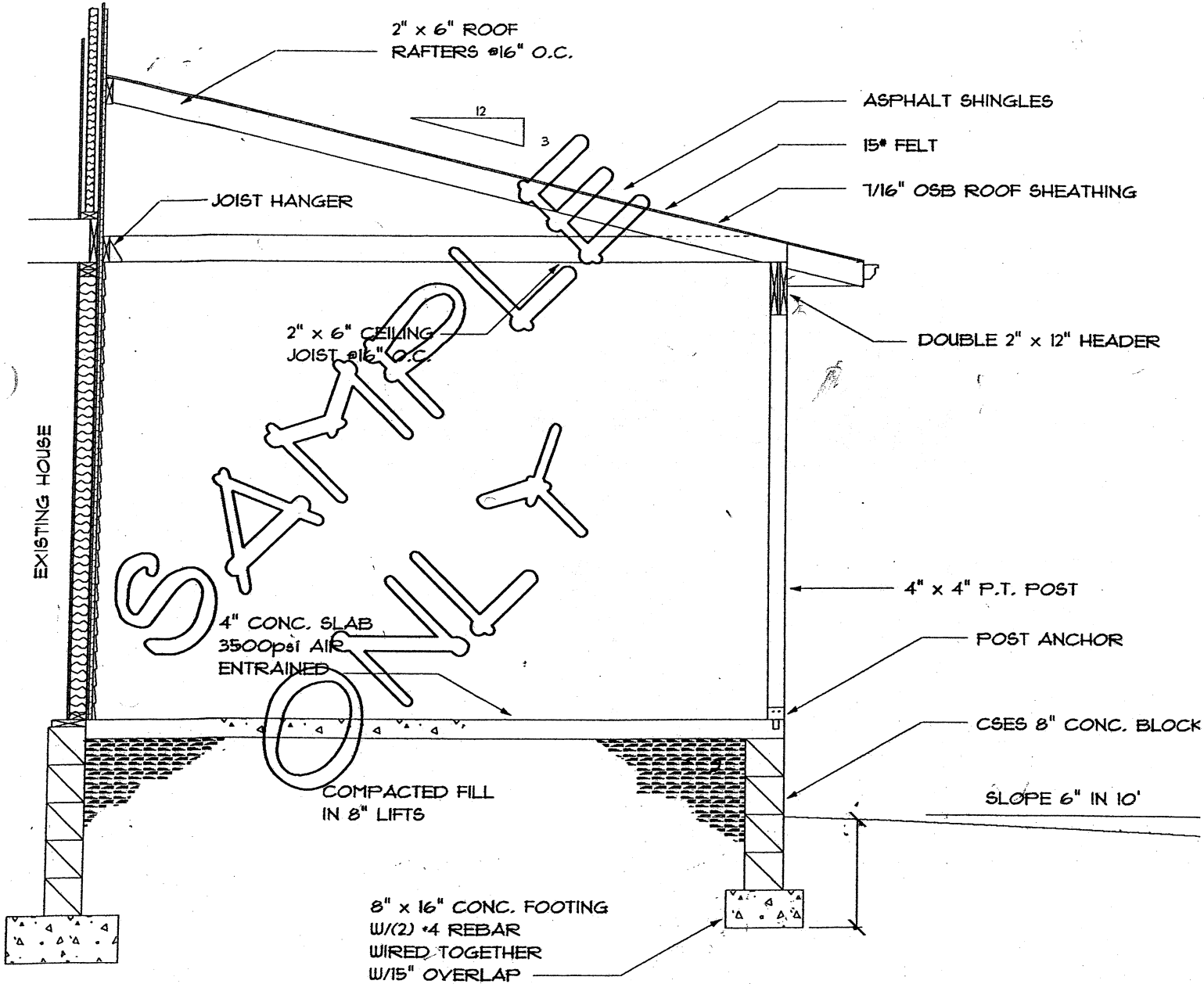
PORCH ELEVATION



Rev 05/03

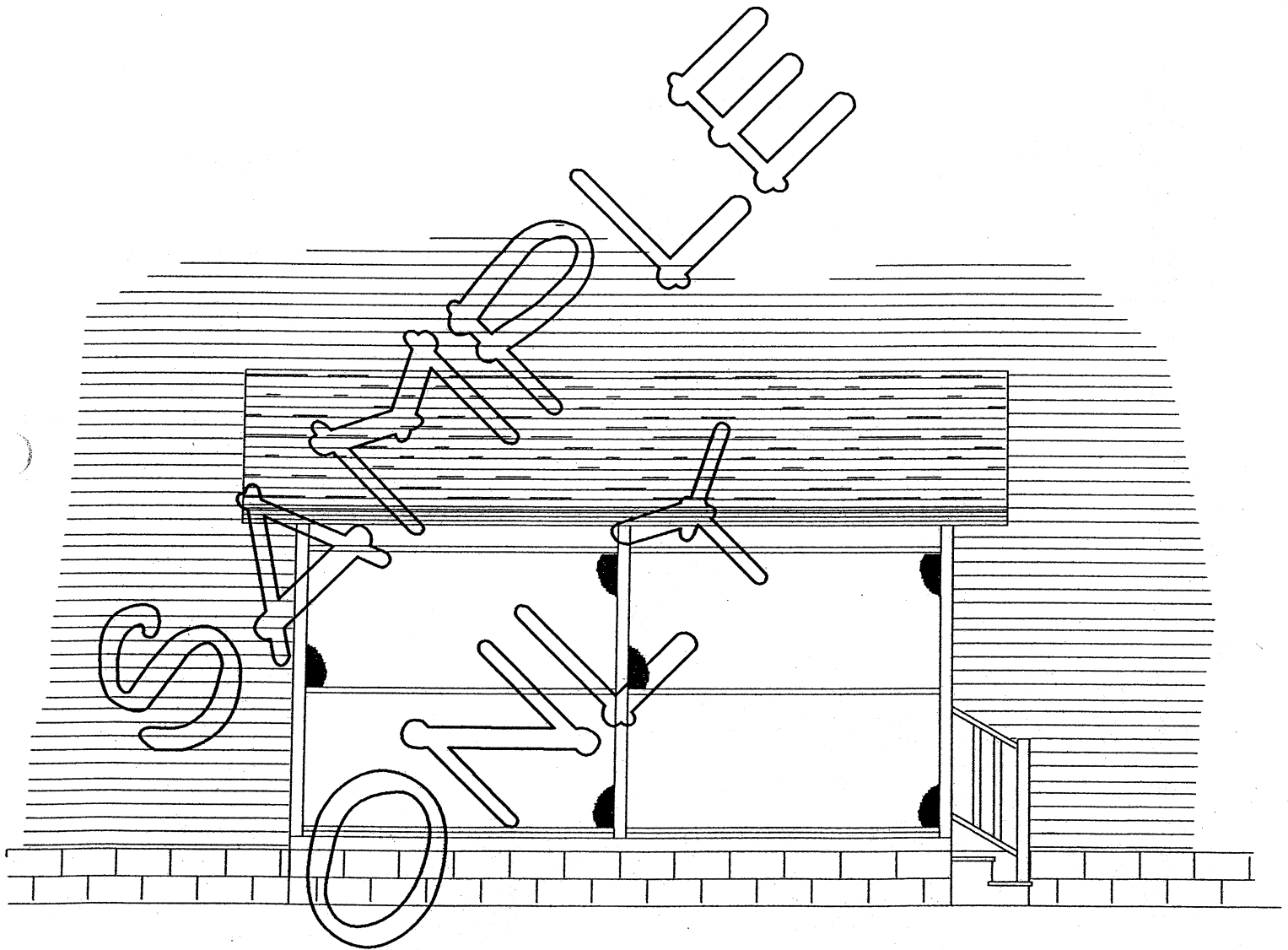
KENT COUNTY INSPECTIONS & ENFORCEMENT

PORCH CROSS SECTION

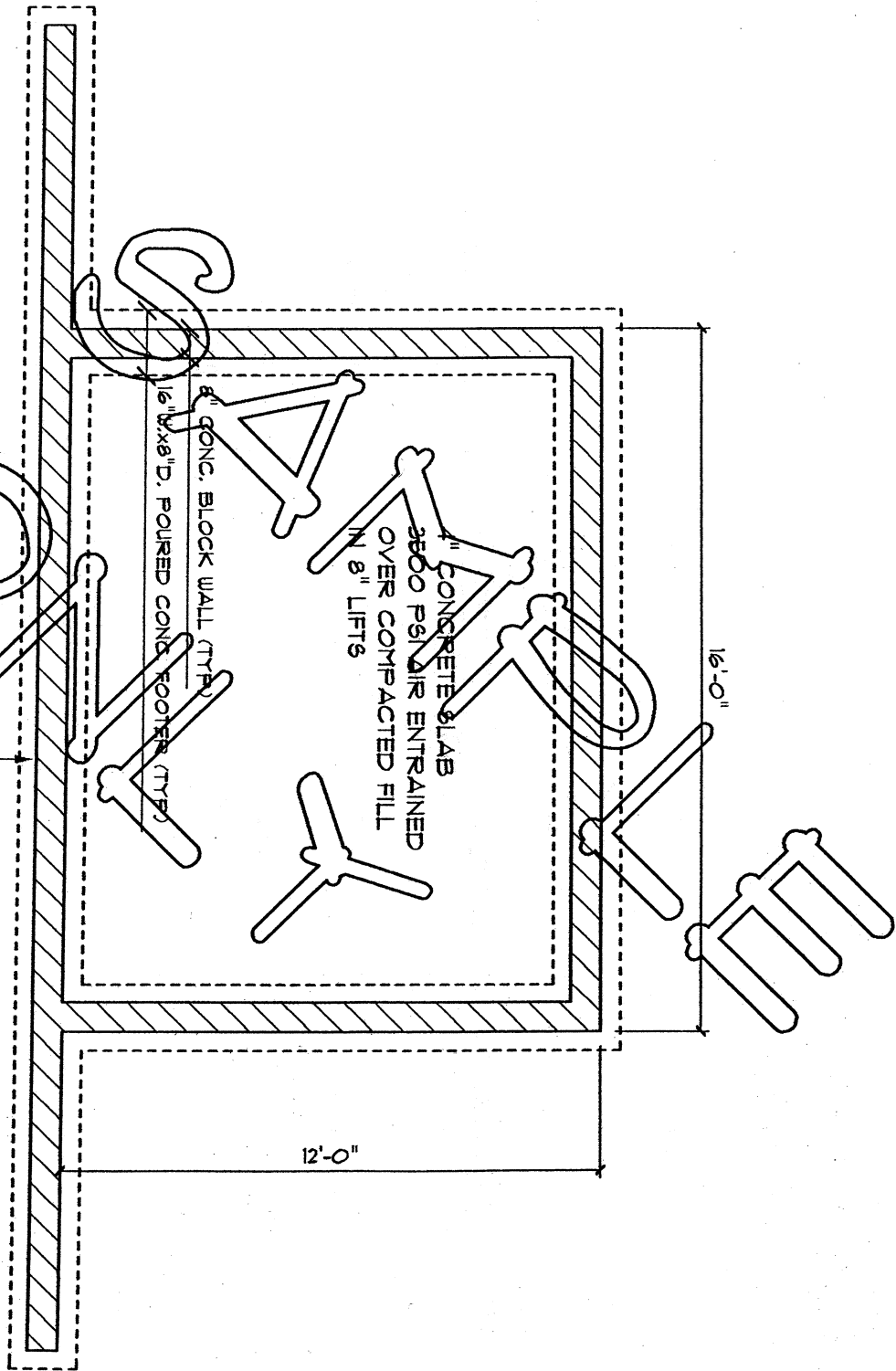


KENT COUNTY INSPECTIONS & ENFORCEMENT

PORCH ELEVATION

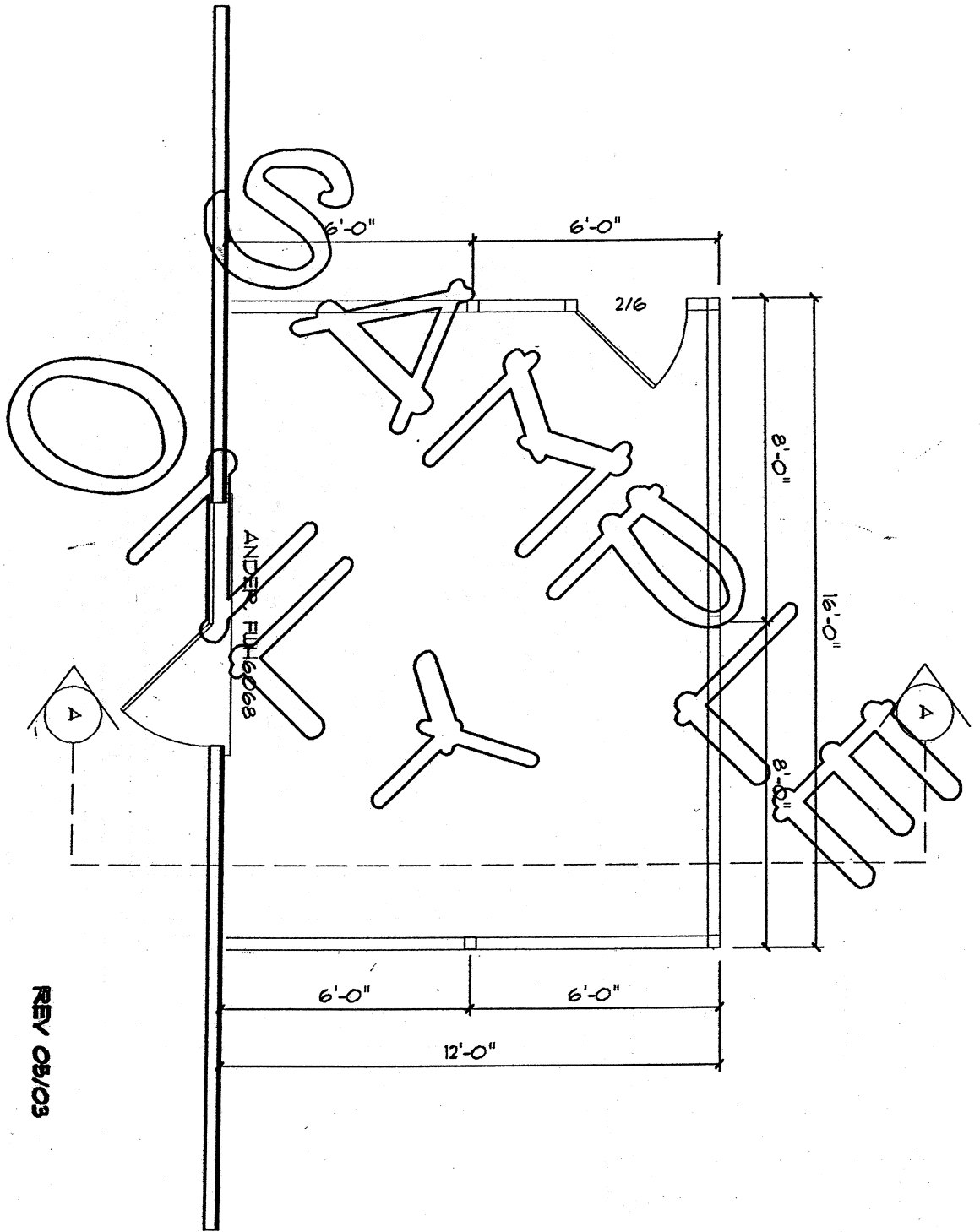


REAR

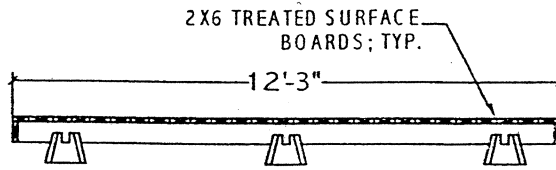


FOUNDATION PLAN

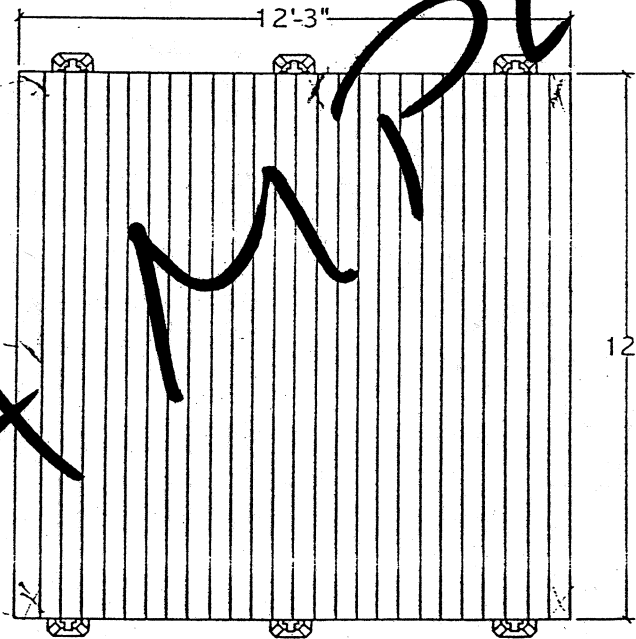
REV 08/03



REV 05/03



① DECKING SECTION
SCALE: 1/4" = 1' - 0"



② DECKING PLAN
SCALE: 1/4" = 1' - 0"

Handwritten notes:
 2x6 treated surface boards - 12'-3" = 150" - 3" = 147"
 147" / 16" = 9.1875
 9 full spacers + 1 partial spacer = 10 spacers
 10 spacers + 11 boards = 21 total pieces
 12' x 12' = 144 sq ft
 21 pieces x 16" x 2" = 672 sq ft of material
 672 sq ft / 144 sq ft = 4.666... = 4 2/3 times as much material as the deck area

EXAMPLE

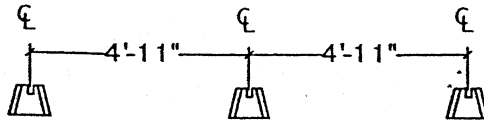


Floating
Foundation
Deck Systems

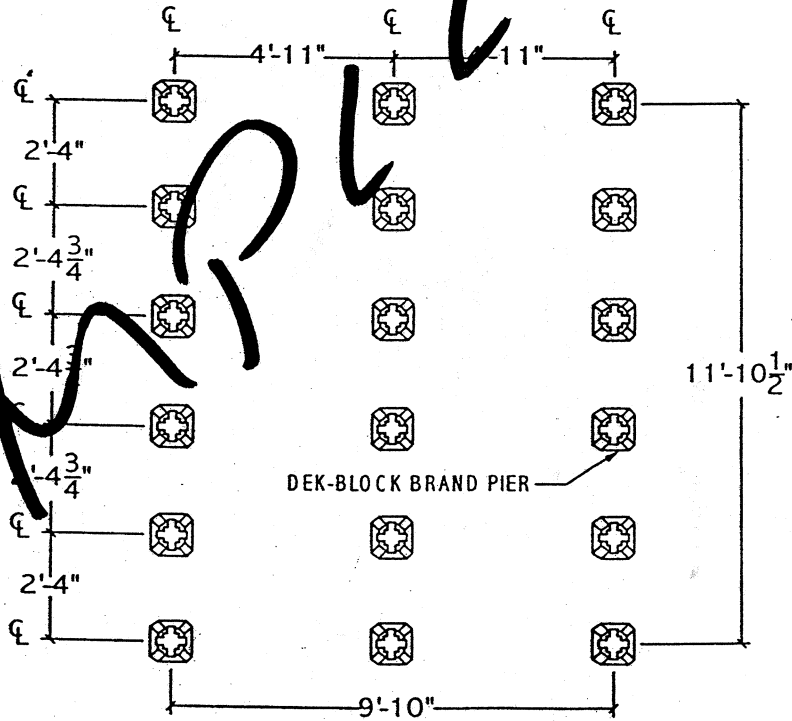
12' x 12'
www.DECKPLANS.com

DEKBRANDS
P.O. BOX 14804
MPLS., MN 55414
(612) 331-4755

Live Technical Support
1-800-664-2705
7 Days a Week - 365 Days a Year
(5:00 am - 9:00 pm CST)



1 DEK-BLOCK LAYOUT SECTION
SCALE: 1/4" = 1'-0"



2 DEK-BLOCK LAYOUT PLAN
SCALE: 1/4" = 1'-0"

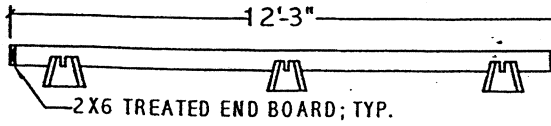


Floating
Foundation
Deck Systems

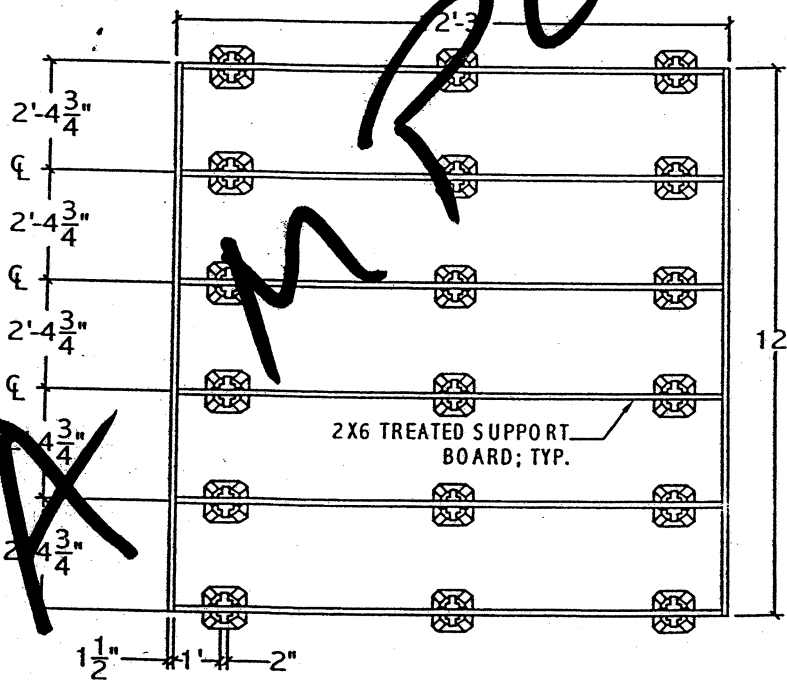
12' x 12'
www.DECKPLANS.com

DEKBRANDS
P.O. BOX 14804
MPLS., MN 55414
(612) 331-4755

Live Technical Support
1-800-664-2705
7 Days a Week - 365 Days a Year
(5:00 am - 9:00 pm CST)



① **FRAMING SECTION**
SCALE: 1/4" = 1'-0"



② **FRAMING PLAN**
SCALE: 1/4" = 1'-0"



Floating
Foundation
Deck Systems

12' x 12'
www.DECKPLANS.com

DEKBRANDS
P.O. BOX 14804
MPLS., MN 55414
(612) 331-4755

Live Technical Support
1-800-664-2705
7 Days a Week - 365 Days a Year
(5:00 am - 9:00 pm CST)