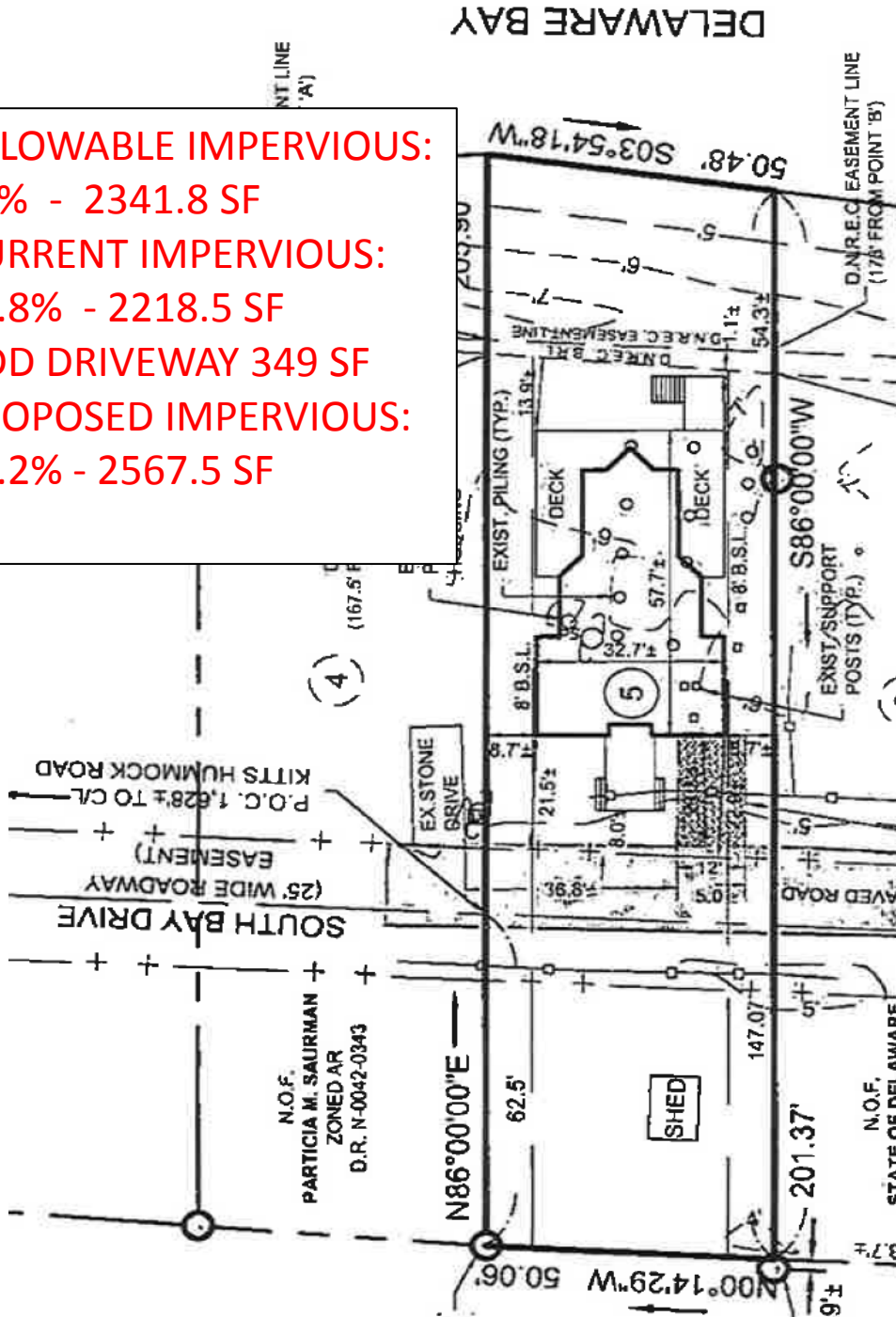


Exhibit B

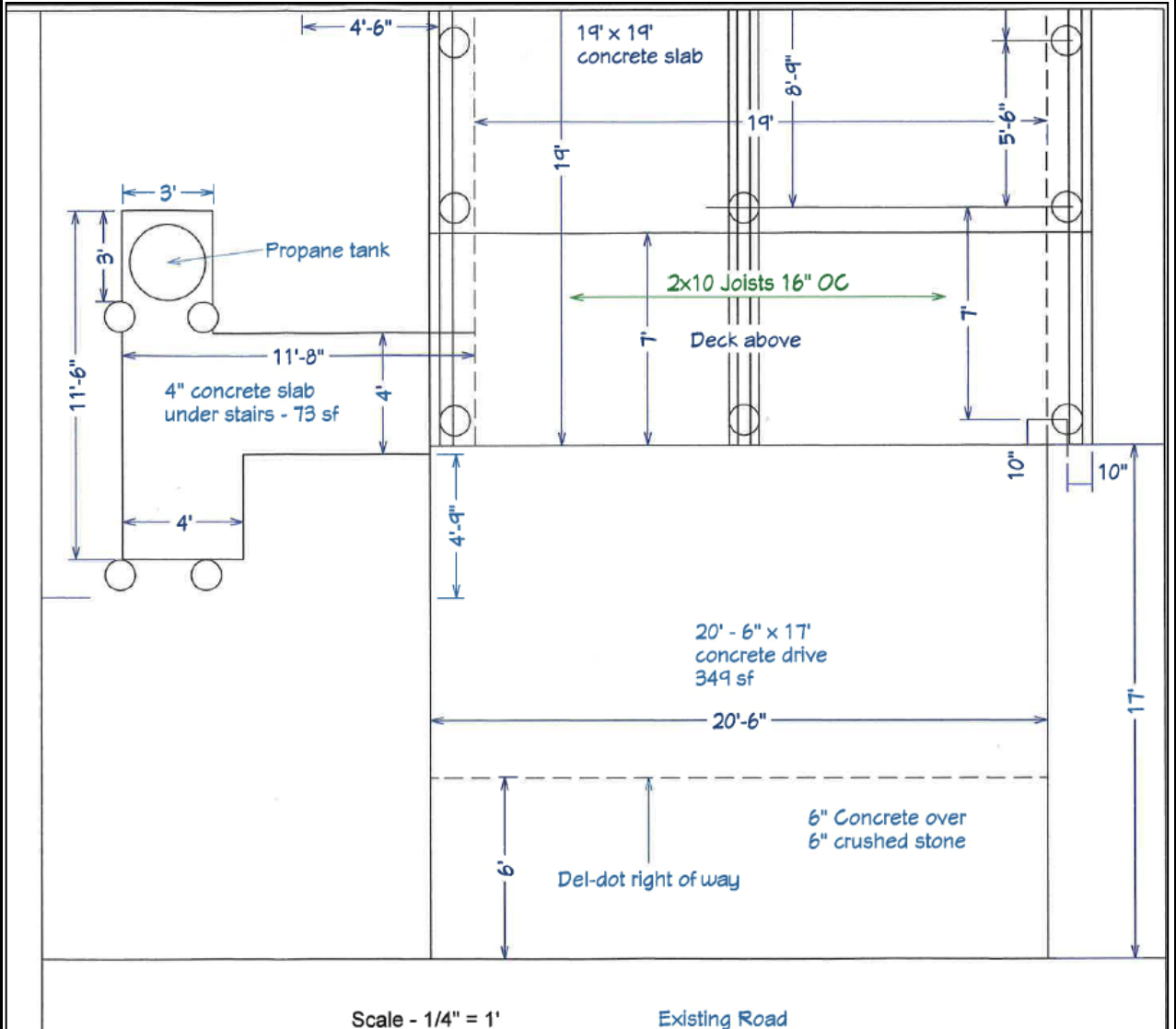
Variance from the maximum impervious surface coverage of 23% to enable the construction of a driveway



- ALLOWABLE IMPERVIOUS: 23% - 2341.8 SF
- CURRENT IMPERVIOUS: 21.8% - 2218.5 SF
- ADD DRIVEWAY 349 SF
- PROPOSED IMPERVIOUS: 25.2% - 2567.5 SF



Variance from the maximum impervious surface coverage of 23% to enable the construction of a driveway



CONCRETE DRIVE PLAN