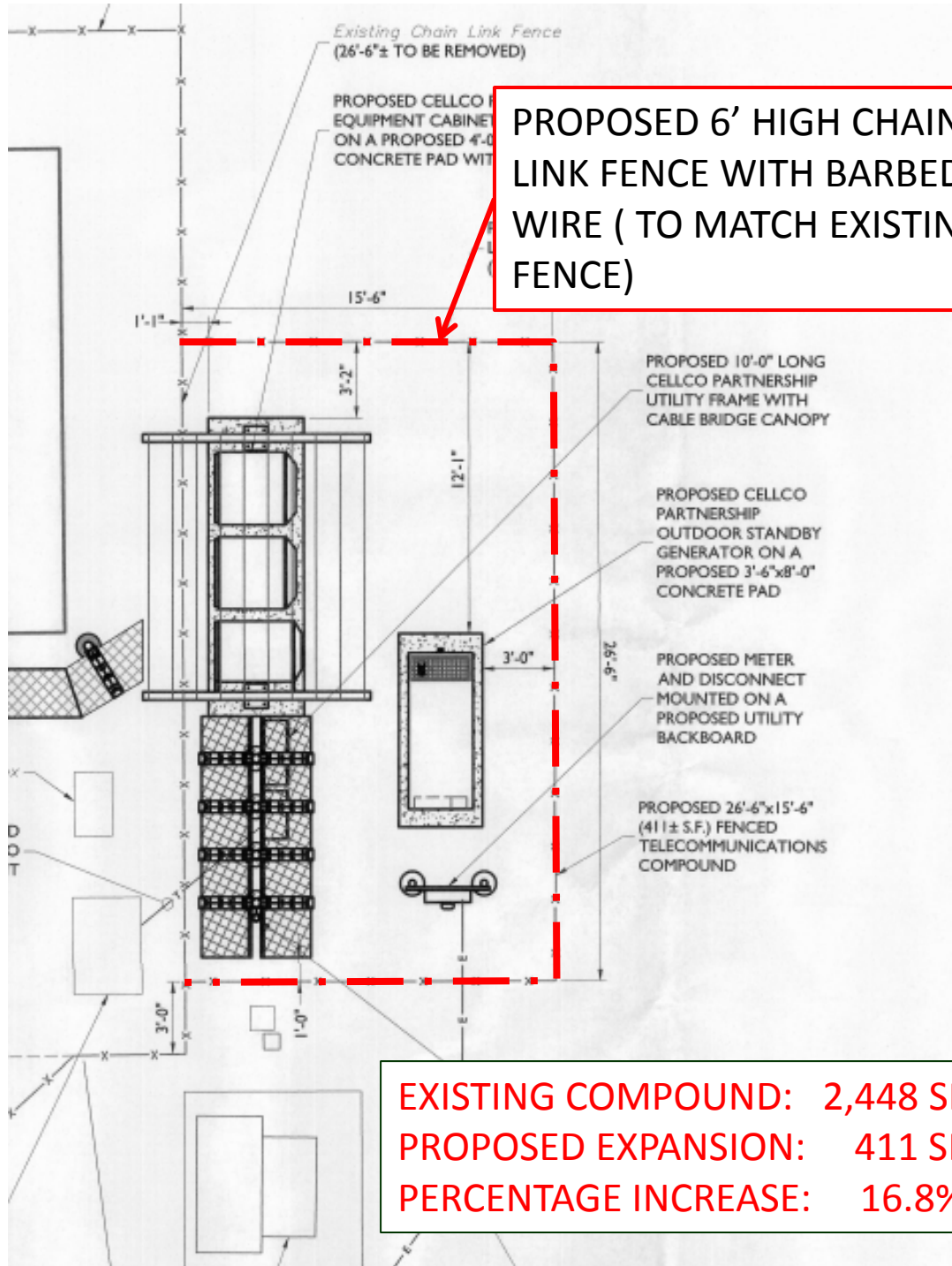




# Exhibit C

Cellco Partnership d/b/a Verizon Wireless  
(American Industrial & Marine Electric, Inc.)

25 % expansion of a legal non-conforming use variance from the requirements for the enlargement or extension of nonconforming buildings, structures or uses to allow for the expansion of a nonconforming cellular communications equipment compound



EXISTING COMPOUND: 2,448 SF  
PROPOSED EXPANSION: 411 SF  
PERCENTAGE INCREASE: 16.8%