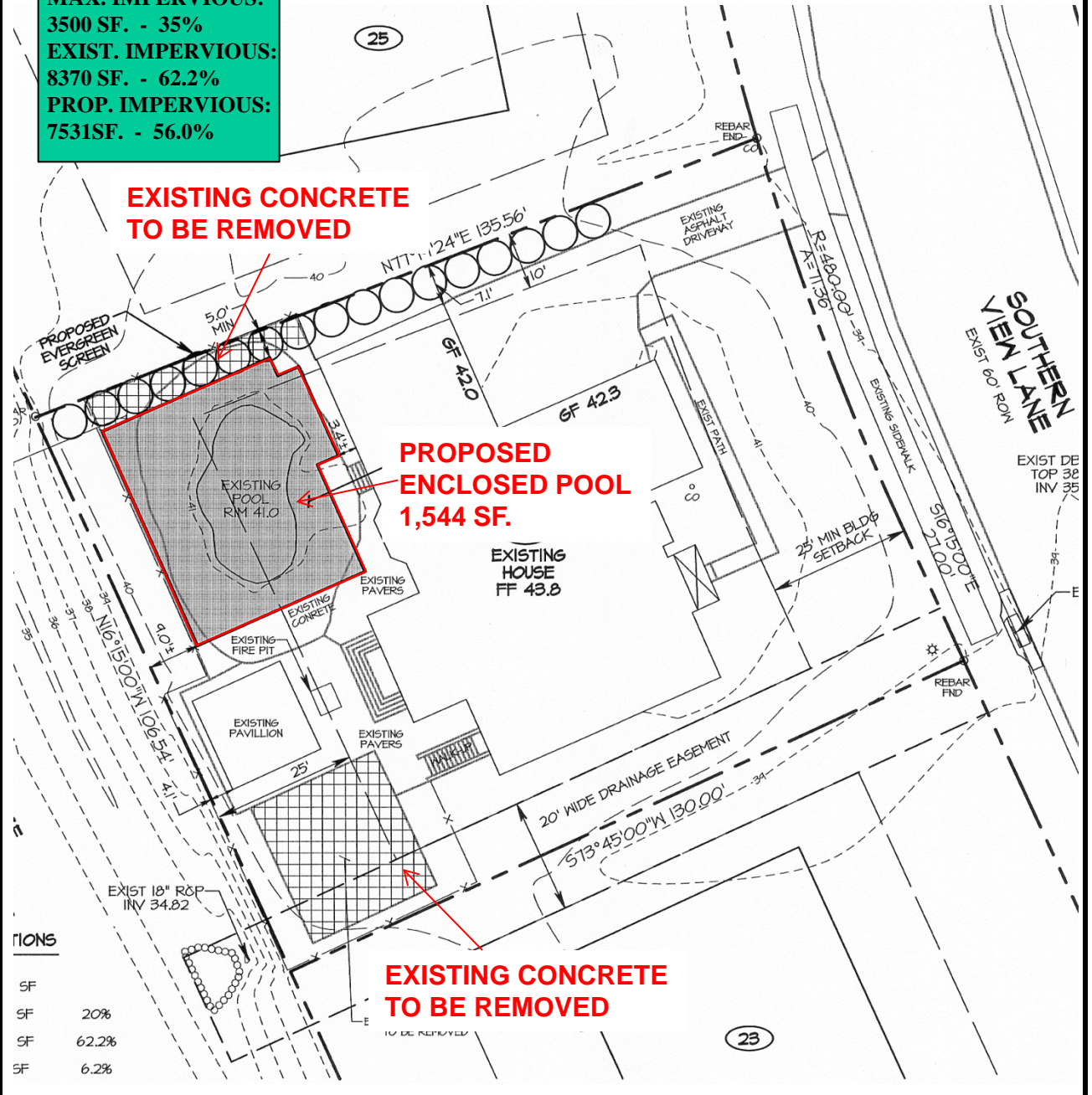


# Exhibit B

Variance from the maximum impervious surface coverage of 35% to allow for a pool enclosure

**LOT AREA: 13,449 SF.**  
**MAX. IMPERVIOUS: 3500 SF. - 35%**  
**EXIST. IMPERVIOUS: 8370 SF. - 62.2%**  
**PROP. IMPERVIOUS: 7531 SF. - 56.0%**



NOTATIONS

SF	
SF	20%
SF	62.2%
SF	6.2%

# PLOT PLAN