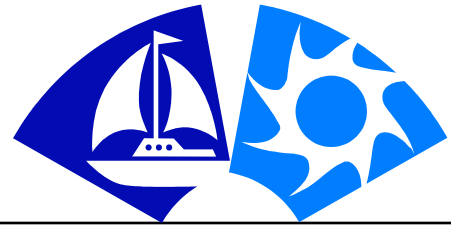


Kent Connections



A Newsletter Published by Kent County Levy Court for its Employees

August 2005



Employee of the Month *Lisa E. Cooper*

The Kent County Employee Council has selected LISA E. COOPER from the Receiver of Taxes Office as the August 2005 Employee of the Month.

Lisa, a Kent County employee since June 2003, is the Monition Program Administrator in the Receiver of Taxes Office responsible for maintaining detailed files on delinquent accounts, researching and verifying ownership of delinquent properties, maintaining mobile home records for proper taxation, and preparing documents for monition proceedings.

Simply put, Lisa is the County's "tax collector" of past due taxes, but she promotes a positive image of Kent County due to her professional and courteous attitude in dealing with tardy taxpayers. She is pleasant and understanding of their financial situations, but is firm in her mission to collect what is owed to the County and local school districts. Through her sheer determination, the County has collected over two million dollars of past due taxes and fees. In fact, there are no delinquent accounts eligible for the monitions process from the month of July due to her efficiency and tact.

Congratulations Lisa on a job well done!

COMING NEXT MONTH:

- > School session starts—so watch out for children
- > How did the first ever surplus sale compute?
- > Shooting for the stars—DASAF project ignites

THIS MONTH'S ISSUE:

- | | |
|----------------------|-------------------------|
| 14 - A's to Your Q's | 10 - Mark Your Calendar |
| 4 - Birthdays | 4 - On The Move |
| 6 - From The Stacks | 6 - Recipe of the Month |

Kent Connections is published for the employees and retirees of Kent County Levy Court using Microsoft Publisher® & Microsoft PowerPoint®. Comments, suggestions and story ideas should be addressed to: Kent County Personnel Office, 555 Bay Road, Dover, DE 19901, or given to Allan Kujala, Sophie Dear, Cathleen McLean, or Carissa Zeiters. Or, call the Personnel Office at 744-2310.

Enhancements eyed for new County complex

By Carissa Zeiters, Personnel Technician II

The new Kent County Administrative Complex is completed and occupied, but after four months a few enhancements would be nice. So, what is the latest buzz on the new County building? Here are some answers to those mystifying questions. Employees want to "be in the know"!

Do you ever have one of those days when you thought you had cash in your wallet, but your spouse must have taken it to get gas without letting you know first? Or you really want those new Dill Pickle chips in the vending machine, but you know you have to get a soda to wash it down, so you bum a couple bucks off of your cubicle neighbor. Soon you won't have to beg or borrow from a friendly employee – if you have an ATM card.

Proposals have been requested, reviewed and a recommendation made to let Wilmington Trust set up an ATM machine in the Complex service ring or rotunda. After Levy Court review and a contract is signed it will take approximately a month for delivery, and the foreign transaction fee is only one dollar.

Now some of us have the opposite problem. We may carry larger bills and need change. Now when I say larger I mean \$5 bills, ("yeah, that's right, I work for Kent County Levy Court and proud of it"). If you need to break your \$5 or \$1 bill for some change there will soon be change machines located in the kitchen on the second floor and near the vending machines on the first floor. Like the vending machines, the new change machine will be provided by Delaware Business Enterprise Program. Facilities Management Division Manager DICK MacDONALD has been in contact with the company and is awaiting a delivery date.

"Excuse me, where is room 214?" I'm sure all of you have been asked where a particular office is. A free standing 3 sided directory will soon diminish this
(Continued on Page 13)

Welcome to Kent County!



Name: SABRINA FITE



Job: GIS Technician III
Date hired: June 1, 2005
Education: Geological Engineering Technology
What I like most about my new job: There is a lot to do to keep me busy
Greatest accomplishment: Being content in life

Greatest challenge or obstacle: I can be pessimistic

Future goals: Own a business

Person/event that most inspired me in my career: No inspirations, just a personal interest

I'm most relaxed and happy when I'm doing this: Knitting

Family: Husband

Most recent movie enjoyed: The Last Samurai

Favorite TV show: The Family Guy

Favorite sport: Hockey

Favorite meal: Filet Mignon with a good horseradish and a baked potato

Favorite music: My favorite artists are Bjork and Erasure and I listen to Hip Hop and R&B

Favorite saying or slogan: "Meditate. Live purely. Be quiet. Do your work with mastery. Like the moon, come out from behind the clouds! Shine." -- Buddha

Who has had the most impact on my life: My husband

If I won a million dollars, I would: Ask Xhibit to "pimp my ride"

You'd be surprised to learn that I: Want to learn how to ride a motorcycle

Words that describe me: Quiet, crafty, open-minded **4733**

A Monthly Contest

A free movie ticket will be given to the first two employees who find the last four digits of his/her Social Security number in the current issue of Kent Connections and contacts the Personnel Office at 744-2310. CELENE WALTON in the Division of Inspections & Enforcement and KIM DIXON in the Tax Office found their numbers and claimed a movie ticket each in July.

EOM INSIGHT



Name: LISA COOPER

Job: Monition Program Administrator

Years with the County: 2

Education: Graduated from Caesar Rodney High School

What I like most about my job: Collecting the delinquent taxes that are due to the County and schools, and my co-workers

What I'd most like to change: More privacy when talking on the phone to customers, and to be able to collect money due on mobile home accounts

Family: Mark (husband); Rob (son), Alexis (daughter-in-law), and Alexa (granddaughter); and Wendy (daughter), Greg (son-in-law), and Sabrina (granddaughter)

After work I enjoy: Spending time with family

Favorite new movie: "Notebook"

Favorite old movie: "Pretty Woman"

Favorite TV show: "Law & Order: SVU"

Favorite TV show as a child: "Flintstones"

Favorite sport: Football

Favorite meal: Prime rib and lobster

Favorite music: Country

Favorite Kent County restaurant: Iron Gate

Favorite Kent County event: First Night Dover

People (living or dead) I'd invite to dinner: Grandparents

I'm most proud of: My family

Pet peeve: People that don't pay their taxes but have a cell phone to call me with excuses

Motto: Do unto others as you would want others to do unto you.

If I've learned one thing in life, it's: Don't assume anything

Who has had the most impact on my life: My husband

A dream I have is to: Build a new home

If I won a million dollars, I would: Share with my family

You'd be surprised to learn that I: Am really taller than I look

The most adventurous thing I've ever done is: Watching the birth of my granddaughter

Three words that describe me: Caring, dependable, honest **4999**

* * *

"It is easier to go down a hill than up, but the view is from the top."
Anonymous

Staff/Family win ribbons at State Fair

By Carissa Zeiters, Personnel Technician II

Where can you enjoy a live concert, watch a demolition derby, browse exhibits, listen to a rooster crowing contest, and see all kinds of farm animals in the same week? The Delaware State Fair in Harrington which just wrapped up after two weeks on July 30.



Some say it's the biggest thing that happens in Kent County each year, so it's no surprise many County employees and their families took time to enjoy the attractions and activities last month.

DEAN DOBBERT, Medical Director of EMS, attended the Hoobastank concert.

JEAN FABI of Planning Services showed two meat goat does - one finished 14 out of 28 in her class and the other finished 5th.

Amanda Fabi, daughter of JEAN FABI, won 1st Place Market Hog (250-260 weight category), Grand Champion Barrow (this little piggie also made it to the Livestock Auction), 1st place age 12 Pygmy goat showmanship, Grand Champion Pygmy goat showman, 3rd place - 12 year old Showmanship - Market Sheep, 3rd place Market Sheep - (102 lb. weight category), 5th place Meat Goat, 6th place
(Continued on Page 14)

Volunteers start planning United Way campaign

The annual Kent County Levy Court United Way fundraising campaign will kick off in October. Campaign volunteers JOHN McDOWELL, CAT McLEAN, KEITH MUMFORD, ROBERT SAVAGE, and JOHN WILLSON have been tapped again this year to coordinate the voluntary charitable giving in their respective departments.



of Delaware

The coordinators are planning another interesting and fun campaign with many of the same fundraising activities as last year with a few new surprises. According to McDowell, the group has already decided to include another silent auction due to its popularity last year.

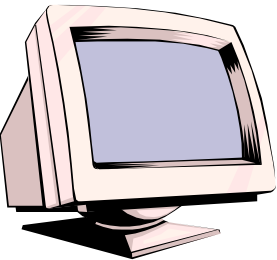
"We want to get the word out early about the Silent Auction and let everyone know about it. Last year donations included airline tickets, a Longaberger basket, pies, cakes, and many other items generously provided by employees to help the cause. This year we want to give everyone plenty of time to be thinking about what they can contribute," McDowell added.

The coordinators are hard at work developing the 2005 United Way campaign strategy, so if you have any ideas let a coordinator know.

Surplus computer monitors offered to County employees

By Allan Kujala, Personnel Director

County employees have a unique opportunity to purchase a surplus County owned computer monitor beginning Monday, August 15.



The monitors became surplus due to the conversion from large CRT monitors to the current flat screen models in conjunction with the move

to the new County administration complex and the inability to sell the old monitors to a vendor.

A total of four (4) 14-inch, 44 15-inch, and twelve (12) 17-inch monitors from various manufacturers will be offered to employees at \$5.00 each on a one per person, first come, first served basis. In addition, one 20-inch, five (5) 21-inch, and one 22-inch monitors will be sold to the highest bidder at a week long silent auction, which concludes on Friday, August 19 at 4:00 p.m.

All monitors will be sold in "as is" condition with no guarantees. Some do not have power cords.

Employees may inspect and bid on the larger monitors in the County Personnel Office. After the initial week-long offer, employees on a waiting list can purchase additional monitors - if any remain.



ON THE MOVE. . .

Compiled by Carissa Zeiters, Personnel Technician II

New Hires

07/01/05 WM. ROBERT PIERCE, GIS Technician II, Grade 8, Public Works/Engineering

07/18/05 MATTHEW BIDDLE, Parks Worker I, Grade 5, Community Services/Parks

07/25/05 JAMES BROWN, Jr., Parks Worker II, Grade 6, Community Services/Parks

Promotions

07/01/05 JUDY ALLEN, Accountant I, Grade 10 to Accountant II, Grade 11, Finance

07/01/05 SUSAN HITCHENS, Accountant II, Grade 11 to Accountant III, Grade 12, Finance

07/01/05 MICHAEL HARRINGTON, Engineering Technician I, Grade 8 to Engineering Technician II, Grade 9, Public Works/Engineering

07/01/05 WILLIAM POWELL, Maintenance Foreman, Grade 11 to Maintenance Supervisor, Grade 12, Public Works/Wastewater Facilities

07/01/05 FRED STRAUSS, Parks Worker I, Grade 5 to Parks Worker II, Grade 6, Community Services/Parks

07/05/05 KEITH SCHWAMBERGER, Maintenance Mechanic III, Grade 9 to Maintenance Foreman, Grade 11, Public Works/Wastewater Facilities

07/05/05 WALLACE WOOTTEN, Maintenance Mechanic II, Grade 8 to Electrician I, Grade 9, Public Works/Wastewater Facilities

07/11/05 DALE GILSETH, Maintenance Mechanic I, Grade 6 to Maintenance Mechanic II, Grade 8, Public Works/Wastewater Facilities

Reassignment

07/01/05 ALBERT PORRECA, Maintenance Supervisor, Public Works/Wastewater Facilities to Engineering Project Manager I, Public Works/Engineering

Reclassification

07/01/05 SHARON BEAN, Property Specialist Supervisor, Grade 10 to Grade 11, Assessment Office

07/01/05 KATHY SKINNER, Secretary, Grade 6 to Senior Secretary, Grade 8, Planning Services/Planning

Milestones

07/19/90 ROBERT S. McLEOD, County Administrator, Administration—15 years

07/27/90 DAVID MICK, EMS Operations Support Officer, Public Safety/EMS—15 years

07/19/95 ANGELA WISE, Account Specialist II, Comptroller's Office—10 years

07/01/00 WADE PAUGH, Zoning Inspector I, Planning Services/Planning—5 years

07/03/00 DEXTER KOLLIE, Permit Technician I, Planning Services/Inspect. & Enforcement—5 years

COUNTY BIRTHDAYS



AUGUST

01 Kim Lombardi, Planning Services/I&E

02 Sandy Hanggi, Community Services/Library Svcs.

03 Ronald Harrington, Public Works/Engineering

04 Cynthia Laird, Finance

10 Cat McLean, Administration

11 Jerry Johnston, Public Works/Engineering

11 Kelly Wilson, Planning Services/Planning

12 Jan Morris, Administration

13 Mary Eisenbrey, Assessment Office

13 Pat Uhey, Wills Office

15 Don Williams, Public Works/WWF

17 Melissa Stanley, Planning Services/I&E

18 Raymond Hannum, Public Works/Facilities Mgmt.

19 Mike Clarke, Public Safety/EMS

19 Scott Vautard, Planning Services/I&E

21 Jack VanDorpe, Sheriff's Office

21 Mike Weyant, Planning Services/I&E

22 Diana Golt, Public Works/Engineering

23 Jody Coulbourne, Deeds Office

23 Sherry Barker, Public Works/Engineering

24 Lou Cox, Assessment Office

24 Angela Short, Community Services

24 Jason MacDonald, Public Safety/EMS

26 James Nunes, Public Works/WWF

27 Debora Elders, Finance

28 Robert Wayman, Public Works/Facilities Mgmt.

28 Andrea Illig, Community Services/Library Svcs.

28 Robert Probst, Community Services/Recreation

SEPTEMBER

06 Werner Gilliam, Planning Svcs./Insp. & Enfor.

06 Carl Solberg, Community Svcs./Parks

07 Michelle Lapinski, Community Svcs.

07 William Woodall, Public Works/WWF

08 Mary Karol, Finance

09 John McDowell, Finance

09 Leslie Vasquez, Assessment Office

10 Michael Berry, Public Works/WWF

10 Shelby Burd, Finance

10 Linda Pfeiffer, Finance

11 Robert Bloodsworth, Public Safety/Emer. Comm.

11 Kimberly Crouch, Administration

11 Nicole Vautard, Public Safety/Emer. Mgmt.

14 David Baker, Public Works/WWF

15 Roy Augustine, Public Works/Facilities Mgmt.

15 Allan Kujala, Administration

15 William Pennell, Public Works/WWF

16 Danny McClain, Public Works/WWF

(Continued on Page 14)

Imaging project stays the course despite move

By Kim Crouch, Chief Technology Administrator

The County-wide imaging project started last December continues on course despite the big move to the Kent County Administrative complex in April. Documents have been imaged from various departments, including some documents dating back to 1967.

What is document imaging? It is the conversion of paper documents into electronic images to be available at your finger tips. These documents can be retrieved effortlessly in seconds by any County department and by the public, if access is granted. This gives us the ability to share documents across departments without interruptions to staff to manually search through file cabinets looking for the document.

The benefits of imaging documents include:

- Prevents lost records
- Saves storage space
- Manages records easily
- Finds documents quickly
- Makes images centrally available
- Eliminates need for file cabinets
- Reduce redundancy of documents
- Improves service levels with quick retrieval of documents and information
- Documents can be viewed by multiple users in different locations

The project team started in December 2004 with temporary employees SUSAN WILLSON and LEROY DEAR. In January and February 2005 the scanning team grew to 6 full-time temporary employ-

ees and the project is still going strong. Currently, five members of the imaging team are located in Room 238 and one in the Finance Department.

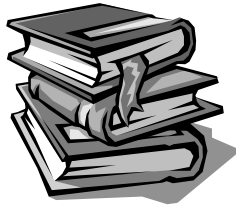
(Continued on Page 6)

OFFICE	DOCUMENTS	DATE RANGE
ASSESSMENT	Assessment property cards	All
	Digital pictures of the House/Building	Ongoing
PLANNING	BOA applications	1969-pres.
	RPC conditional uses	1997-pres.
	RPC rezoning & text amendments	1975-pres.
	RPC site plans	
Record Plans	Comprehensive Plan amendments	2002-pres.
	RPC minutes	1967-pres.
	BOA minutes	1970-pres.
	RPC bylaws	
	Conditional uses	1974-2004
INSPECTIONS	Subdivisions	1968-2004
	Site Plans	1972-2004
	Application Files	
GIS/MAPPING	Misc. files	
	Comp Plan rezoning	1989-2004
	Permit cards	All
	Building permits	2000-pres.
	Ownership history cards	All
FINANCE	Senior tax credit	2001
	Bankruptcy cases	1995
	Mobile home certificates	2002
	Capital projects	1993-pres.
	General fund	
	Sewer, lights & trash	
	Invoices	FY06 forward
Receipts	FY06 forward	
PARKS	Journal entries	FY06 forward
	Park drawings	1967-pres.



Temporary imaging staff members include Tory McLean, Angel Brown, Ebony Bordley, Susan Willson, Scott Adams, and Leroy Dear help keep project on track.

FROM THE STACKS



By Fran Gunning, Library Technician

There is a book review magazine free at your local library each month called the BookPage. It reviews the best in new books and there is always something for anyone interested in reading.

An article in last month's BookPage (America's Book Review) talks about trying to connect boys and books. Jon Scieszka is the author of the article and is a teacher, writer and parent. Three years ago he started a website: guysread.com., and he is releasing a new book Guys Write for Guys Read. The new book is a collection of 90 male authors writing short pieces on memories of what it is to be a boy. His hope is that this collection will help boys find writers they like so they will be motivated to read more for pleasure. All the proceeds from the book will be used to support boys' literacy efforts.

There is also a new book in the kentnet system with practical strategies for librarians, teachers, and parents called Boys and Literacy by Elizabeth Knowles and Martha Smith. This book lists titles and reviews with age levels and breaks down subject areas generally preferred by boys: humor, adventure, information, nonfiction, fantasy, science fiction, horror, mystery, sports, war, biography, history, graphic novels, and realistic fiction.

Lastly, and a big hit with almost everyone is the number 6 book out on July 16, Harry Potter and the Half-Blood Prince by J. K. Rowling. Each book is larger than the one before and there is a reason why JoAnne Kathleen used just her initials. They didn't want little boys to be turned off by a book that is written by a woman. The audio book is being released the same day and is a must, by Grammy winner Jim Dale. He has done all the voices for the whole series, available in both cassette and CD.

Starting Friday, September 2, the Kent County Bookmobile will be parking in the visitors parking lot **from 10 a.m. to 2 p.m. It will be there every Friday**. If we are not going to be there we will let you know via GroupWise. All a person needs is proof of residence in the County. or a library card from Kent County, Dover, Milford, Harrington, Smyrna.

Return books, with good Identification for return to the library can be returned via the County courier van. Remember fines are 10 cents a day if you keep a book over the 2 week check out period.

Recipe of the Month

By Sophie F. Dear, Personnel Technician II

FRUIT SALAD

The quantity and variety of fruit is up to you. If you want leftovers, cut up a little more. Use equal parts lime juice and sugar for the dressing, enough to coat your fruit.

- ¼ cup freshly squeezed lime juice
- ¼ cup sugar
- ½ pineapple, peeled, cored, and cut into 1-inch pieces
- 1 mango, peeled, pitted, and cut into 1-inch pieces
- 2 kiwis, peeled and sliced
- ½ pound grapes (pick off stems)
- ½ small melon, peeled, seeded, and cut into 1-inch pieces
- 1 pint any seasonal berries

In a small bowl, whisk together the lime juice and the sugar. Place cup-up fruit in a large salad bowl, pour sugar-lime mixture over fruit. Taste and adjust seasonings with more lime or sugar as needed.

Yield: 8 servings

2003 Television Food Network©. Recipe courtesy Kathleen Daelemans; show: "Cooking Thin"; episode: "Auto Eaters"

Imaging project stays on track (Continued from Page 5)

When the project started our goal was to have all the Assessment property cards and GIS/Mapping ownership cards scanned before moving into the new County Complex. Prior to scanning, the documents needed to be merged together by map number and prepped for scanning. The staff merged, prepped and scanned 107,500 assessment property cards and 65,280 mapping cards. Our imaging staff worked over-time to achieve our goal.

Our scanning group has done a tremendous job of scanning documents. As of the end of July, they have scanned about 650,000 pages, which equates to 240,000 documents.

Documents that have been scanned to-date are shown in the table on Page 5.

Currently we are scanning building permits from 2000 through the present. Next we will focus on the Personnel and Community Development departments for their imaging needs.

Look for a training class soon for employees interested in learning more about document retrieval using Optiview. **5333**

Learn to exercise safely in fitness room & at home

By Sophie F. Dear, Personnel Technician II

The August training session will cover exercise safety, both in the County's exercise room and outdoors, especially when outdoor temperatures are extremely high. BRENT MOLLOHAN and JEREMY SHEPPARD from the Recreation Division will be conducting the training session.



Two sessions will be held on Wednesday, August 10, at 9:00 a.m. and 3:30 p.m. in room 220 A/B in the Kent County Administrative Complex. To sign up for this session, contact me in Personnel at 744-2312, by e-mail (if you have a list), or in person.

In July, the video "Adventures in Customer Courtesy" was presented. The video emphasized the following approaches to handling customers: (1) Treat customers like you would treat your friends; (2) Mean what you say; and (3) See to the customer's needs before your own. County employees who received credit for this session were: SHERRY BARKER, KELLY BLANCHIES, CHARLOTTE DONNELLY, NAOMI GALLOWAY, JILL JOHNS, KAREN LEWIS, ANITA LLOYD, GALE MAAS, WAYNE McCARTY, CHRISTINA MORTON, KATHY SKINNER, WILLIAM VINCENT, and CARISSA ZEITERS.

Congratulations to SHERRY BARKER of the Engineering Division, who earned a one percent pay increase for achieving 15 CEUs of voluntary training!

At the urging of Employee Council, we are going to try the two-session-per-month training schedule again. Please keep in mind that if attendance declines again, the second session could be eliminated.

Congratulations

Congratulations to RANDY STAATS of the Emergency Communications Division on his marriage to Gemma F. V. Staats in Ozamis, Philippines at the city hall on July 14, 2005.

County staff urged to mentor young through program

By Allan Kujala, Personnel Director

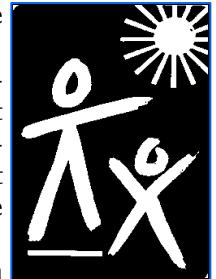
Hundreds of children in the Kent County community are in need, and a little of your time is all they request.

Levy Court approved a partnership with Creative Mentoring last summer after department heads indicated that they would support staff members participating in the program.

Employees interested in spending up to one hour each week with a child at one of the local elementary or charter schools are encouraged to stop by the Personnel Office for a mentoring information packet.

The program requires participants to complete a training program, but it is not lengthy and helps mentors learn what activities the assigned child might like to participate. The commitment only lasts the school year, but program coordinator Jim Crellin says that most mentors receive great personal satisfaction and return year after year.

If you think you would like to mentor a child in your local school community, meet with your department head to discuss the time commitment. Most programs are scheduled around the lunch hour, so department heads understand that the mentoring employee might return back to work a little late.



Kent Co. Employee Obsessions

NASCAR returns to Dover in September and to mark the event the first floor display case features Recreation Program Supervisor BRENT MOLLOHAN's expansive collection of die cast vehicles with driver signatures.

For the golfers, the upstairs display case feature the unique golf ball collection of Communications & Research Assistant BRET SCOTT from courses he has actually played.

Got an interesting hobby or like to collect limited edition baubles? Then show off your talent for amassing things—it may be of interest to others too.

Loan your collection for display in one of two secure lighted glass cases. Contact the Personnel Office for more information. Share your obsession!

EMPLOYEE COUNCIL NEWS



By Jennifer Graham, Employee Council Secretary

Hope everyone is enjoying their summer. It always seems to go by so quickly. The kids will be back to school before you know it, and Fall will be just around the corner. It's also time to start planning for the Holiday Dinner Dance, which will be held on Friday, December 2 at the Cheswold Fire Company beginning at 6:30pm. Watch for more info in the upcoming issues of *Kent Connections*.

The Employee Council members were asked to review the monthly Training Session program, which is offered to the employees by the Personnel Office. In the past, the training sessions were offered monthly with a morning and afternoon session. This provided an opportunity for all employees to participate without leaving the offices unattended. However, due to lack of participation, the training sessions were reduced to one morning session per month. After discussing the program with us, the Personnel Director agreed to begin offering two sessions per month starting in August. This will be done on a trial basis, depending on employee attendance—so please make it a point to divide interested employees into two groups to help keep the two sessions full enough to retain.

Congratulations to LISA COOPER of the Receiver of Taxes office, for being selected as the August 2005 Employee of the Month. Lisa will enjoy a paid day off during the month of August, as well as a designated parking spot near the employee entrance of the Complex. She will also receive a \$100 stipend and a chance at being selected as the Kent County Employee of the Year.

Do you know of a fellow employee who deserves to be recognized for a job well done? Have you noticed someone going above and beyond their normal duties? Why not nominate them for Employee of the Month? The nomination forms can be found on the V: drive, as well as in the Mailroom at the Administrative Complex. After completing the form, simply return it to the Personnel office.

Your Employee Council members are: President CATHLEEN "Cat" McLEAN, Vice President JASON MILLER, Secretary JENNIFER GRAHAM, Treasurer KATHY SKINNER, and members CYNDI LAIRD, MICHELLE LAPINSKI, and MELISSA STANLEY.

Tech Talk



By Mary Ratliff, Microcomputer Specialist

There is no foolproof way to prevent all spam, but there are steps that you can take to limit the amount of spam that you receive.

- Never provide your email address on websites, newsgroup lists or other online public forums.
- Never make a purchase from unsolicited email.
- If you do not know the sender of an unsolicited email message, delete it.
- Never respond to any spam messages or click on any links in the message. Do not click on "unsubscribe" links from Spam or follow "removal" instructions.
- Never give your primary email address to anyone or any site you don't trust.
- Do not click "yes" when an Active X dialog box pops up unless you know what is downloading.
- Use GroupWise rules to filter email. Block keywords if the subject line of the Spam mail has any word in common with others. Block the address if Spam is coming from the same email address. Make sure the words are spelled the same.

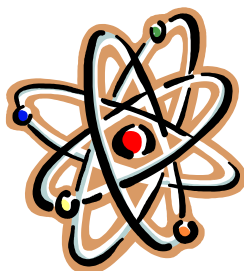
Follow these steps to create a rule:

1. From the drop down menu in the GroupWise Client choose Tools -> Rules.
2. Click "New."
3. Type a name in "Rule Name."
4. Under "When event is," click the double arrow and check "New Item."
5. Next to "New Item," check the "Received" box.
6. Under "Item Types," check "Mail."
7. Click "Define Conditions."
8. In the drop-down box, select the condition. Click "From" if the e-mail is from a particular address. Click "Subject" to block key words. In the next block, enter the email address or the subject that you wish to block. Be very specific with this entry because you might delete mail that you want to receive. Click OK.
9. Under "Then actions are," click "Add Action." Then, select "Empty Item." Click OK in the "Decline with Options" window. These items will be deleted from your mailbox permanently.
10. Click "Save" to save the rule.
11. Make sure the box next to the rule is checked. Click "Run." Then, close the window.

Public Safety can detect radiation with device

By Dave Mick, EMS Operations Support Officer

The latest new equipment from Homeland Security and Terrorism Preparedness to hit the street for Emergency Services is a radiation detection device. Soon each fire department, BLS ambulance, and Medic unit will be equipped with these devices. The new units will be able to alert emergency responders to the presence of higher than normal levels of Gamma radiation. These units are very sensitive and will alarm with a change of a few microRems of detected radiation. If the Medics encounter a patient who has had recent radiation therapy this unit will likely alarm to that patient.



Speaking of radiation....do you know how much radiation you are exposed to every day? And what the heck is a microRem, anyway? Here's probably more information than you ever wanted to know about radiation.

There are many sources of natural radiation in our world. Some sources are well known, like the sun and microwave ovens; some are less known, like the food we eat, or simply traveling in a plane for a while. The level of radiation naturally present at any given location is called "background" radiation. One of the most common units of measure for radiation is called a "REM" (radiation equivalent - man). This

unit of measure is broken down further into milliRems (1,000th of a Rem) and microRems (100,000th of a Rem). Here are some relative doses of radiation for things common to our world:

Dose (micro-Rems)	Source
300	Approximate daily background dose from natural sources
3,000	Approximate dose from a 10-hour plane flight
10,000-20,000	Typical dose from a medical or dental X-ray
70,000	Typical annual dose from medical X-rays and treatments
100,000-200,000	Typical annual background dose from natural sources
<100,000-300,000	Typical annual dose from Radon in homes
100,000-500,000	Typical annual dose from ALL sources for average person
5 million	Maximum annual dose for a worker in a radiation related industry

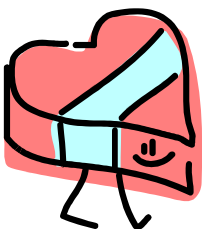
So when does radiation dosing become a health threat? First, it depends on the type of radiation being received. We all know that sunburn and sun tanning increases the risk of skin cancer. If we are talking about the risk from terrorism or industrial accident it's a little different. Most statistics are formulated from short-term whole body exposure. Those studies show that health effects would be expected to be seen at dose levels of 10-100 million microRems. At that level the person would likely feel no ill effects, but blood tests could reveal temporarily decreased white blood cell counts. The known symptoms of radiation illness (weakness, nausea/vomiting, further low blood cell counts) would be mild at dose levels of 100-200 microRems and more severe at 200-350 million microRems.

Remember, all the values above are in microRems. The Delaware State "Turn-Back" Value (the dose level at which responders must retreat is 1.25 Rem which equals 125,000 microRem). So if you happen to be talking to a Medic or other emergency responder who has one of these new detectors and the unit happens to beep...don't panic, don't run away. Even if these new units go into constant alarm mode, the level of radiation they respond to is far from immediately hazardous.

Walkers with Heart needed

By Carissa Zeiters, Personnel Technician II

Calling all walkers! We only have a few walkers signed up for the Heart Walk. I am looking for some team captains to take a group of walkers under their wing. If you are interested in becoming a team captain please contact **CARISSA ZEITERS** in the Personnel Office. Each team captain will recruit approximately 10 walkers for their team.



There will be a kick off event in the second week of August which will be posted. This is a great time to learn more about the Heart Walk and sign up for the main event on Saturday, September 17, 2005 beginning at 9 a.m. at Scull Mansion, 625 South
(Continued on Page 10)

Welcome to Kent County!



Name: ROB PIERCE



Job: GIS Technician II, Public Works

Date hired: July 1, 2005

Education: BA in Geography, minor in Geology, University of Delaware 2005

What I like most about my new job: My co-workers

Greatest accomplishment: Graduating from the U of D

Greatest challenge or obstacle:

Taking my college finals five days after having my appendix removed

Person/event that most inspired me in my career: My career has just begun

If I had it to do over, I would have done this differently: Nothing

I'm most relaxed and happy when I'm doing this: Playing sports or hiking

Family: Father (Bob Pierce), mother (Peggy Pierce), sister (Mary Pierce)

Most recent movie enjoyed: Wedding Crashers

Favorite TV show: MXE

Favorite sport: Soccer, but I love them all

Favorite meal: Chicken, mashed potatoes, was beans, and stuffing (Thanksgiving Dinner)

Favorite music: 3 Doors Down, Coldplay

Favorite saying or slogan: "Just relax."

Who has had the most impact on my life: My father

A dream I have is to: Attend a game at every MLB stadium

If I won a million dollars, I would: Still work, but travel a lot

The most adventurous thing I've ever done is: Came within 20 yards of a large black bear

Words that describe me: Dependable, relaxed, trustworthy **6029** **9652**

MARK YOUR CALENDAR



August 3, 2005 - Blood Pressure Checks WWF from 2-4 p.m.

August 10, 2005 - Blood Pressure Checks Annex at 9 a.m., Kent County Administrative Complex Room 222 from 9:30 - 11 a.m., O'Brien Bldg. from 11-11:30.

August 10, 2005 - L&W Rep. to answer health insurance questions from 1-2 p.m. in Room 222 at the Kent County Administrative Complex.

August 10, 2005 - Employee Training Session on "Exercise Safety". Sessions will be held at 9:00 a.m. and 3:30 p.m. in room 220-A/B in the Kent County Administrative Complex.

August 15-19, 2005 - Surplus computer monitors available to County employees for one week only. Larger screen monitors will be sold to highest bidder via silent auction. Stop by Personnel Office to view monitors.

September 5, 2005 - Labor Day holiday. County offices closed.

Heart Walk seeks County walkers

(Continued from Page 9)

State Street walking 3.1 miles through scenic Dover. There will be a post party at 11 a.m.

Donation envelopes are here and available for pick up in the Personnel Office. Kent County Levy Court has a new goal of \$4,000 to beat the \$2,954 that was raised for 2004. I know we can do it. The money raised goes towards the fight against heart disease and stroke. This is a great opportunity to give back to the community.

Congratulations to KATHY PHINNEY of Administration for being the first employee to sign up for the walk. Kathy will receive a Heart Walk t-shirt located in the display case on the second floor of the Kent County Administrative Complex. **8778**

In Memoriam

JOSHUA M. TWILLEY, a former Kent County Levy Court Commissioner, passed away on June 25, 2005. Mr. Twilley was a Commissioner for 11 years, and served as Levy Court President for several years. Our condolences to his family.

High Praise

Way to go to DARLA DEMPSEY, BRENT MOLLOHAN, KEITH MUMFORD, ANGELA SHORT of the Community Services Department for responding in a helpful and positive manner to a constituent experiencing car trouble. She wrote to say thank you. *Outstanding!!!*



Former centrifuge building converted to Operations control tower at wastewater treatment facility.



Old WWF Building recycled to make room for Eng.

By James Newton, Environmental Program Manager

For many years, the wastewater treatment plant used a centrifuge to concentrate its biosolids. With the contracting of K-F Environmental Technologies and their treatment processes, the centrifuges became obsolete. The centrifuges were subsequently removed and sold as surplus, but the building that housed them remained and became an equipment storage building.

As time progressed, new programs were added to the Public Works Department. These included the industrial pretreatment program and engineering construction inspection. Both of these programs required close coordination with wastewater treatment plant operations. It was decided that they should be located at the treatment plant and not in the new administrative complex in Dover. The question, then became where should they go?

The centrifuge building contained two stories. It became obvious that it could be modified and in fact, if a third story could be added, the plant operators would have an excellent platform for observing the plant's operations. The third floor was to be added on top of the existing building and consist of mainly windows for observing the plant in all directions. This would provide an excellent point from which visitors could get a "bird's eye" view of the plant before actually viewing the individual treatment units.

The first floor would be designated as a conference room and office space for maintenance management, and the second floor designated for pretreatment and engineering. Levy Court approved the plans in 2004 and in 2005, work began.

As the building began to take shape, it was decided that the second floor was too small for the ever expanding construction inspection and pretreat-

ment programs. They were then moved into offices located in the main administration building, and the second floor was designated for addition conference space and the offices of senior plant managers.

So on your next visit to the plant, check out the new "control tower" and get your own "bird's eye" view of the plant.

NACo conference focus on workshops

Levy Court closed out the 2005 National Association of Counties (NACo) annual Conference during a recent trip to Honolulu, Hawaii. Commissioners ALLAN F. ANGEL, P. BROOKS BANTA, DONALD A. BLAKEY, DAVID R. BURRIS, RONALD D. SMITH, County Administrator ROBERT S. McLEOD, and Communications & Research Assistant BRET SCOTT took in a variety of educational workshops that ranged from redeveloping Brownfields, to finding new and innovative economic development tools, to improving county services. Additionally, NACo provided a timely workshop on the recent Supreme Court decision on eminent domain and how it could affect the Counties.

New to this year's conference was a series of mobile workshops which included a discussion of the recent Base Realignment and Closure announcement and how it would affect the economics of Counties slated to lose military bases. The workshop included a tour of the Honolulu area's military bases and was attended by Commissioner Smith and County Administrator McLeod.

As with every NACo conference Levy Court also attended their day-long Steering Committee meetings to discuss issues of common interest. NACo's twelve Steering Committees use the discussions as the basis for NACo's National County Platform which is presented to Congress. NACo then uses

(Continued on Page 14)

Tuition assistance can advance career

By Allan Kujala, Personnel Director



A popular County benefit can help employees advance in their chosen careers or even change careers - it is the tuition assistance program.

Many existing County employees have taken advantage of the program, which pays up to 75 percent of tuition costs for higher education courses leading to a work related degree. Former

County employees often advise that their new employers do not offer such a program - which they regret.

The employee education assistance program provides reimbursement of up to \$750 per fiscal year for undergraduate classes and \$1,000 for graduate courses if the employee earns a minimum passing grade of "C".

Employees interested in the program must first complete an application endorsed by his or her department head. If sufficient funds exist then the class(es) will be approved and the employee will be reimbursed upon submission of receipts and report card. To be eligible to participate and receive reimbursement, an employee must continue to perform satisfactorily in their County job.

How does the County square the 75% reimbursement with the fiscal year maximums of \$750/\$1,000? Employees are eligible for the full 75% reimbursement, but it is paid out over many years often extending past the graduation date—as long as they remain active employees. Employees terminating employment within one year of receiving assistance must reimburse the County.

For more information about the County's tuition assistance program, please contact the Personnel Office at 744-2310.

Congratulations

Congratulations to MIKE WEYANT of the Inspections and Enforcement Division on his marriage to Kathleen A. O'Leary on June 11, 2005. They were married at Holy Cross Church at noon with the reception proceeding at 2 p.m. at the couple's home. They set off on their honeymoon from June 22-July 12, 2005 traveling to Spain, France and Italy with 41 chaperones.

Feds to audit County Wastewater programs in October/November

By Jim Newton, Environmental Program Manager

For the past two years, the County's wastewater treatment plant has been developing an implementing an environmental management system (EMS). The EMS has been developed under a US EPA sponsored program. In order to formalize the program, it has been decided that it will be audited by a third party certification agency.



KEMA – Registered Quality, Inc. of Chalfont, PA has been contracted to certify the audit to the International Organization of Standardization (ISO) 14001 EMS standard. In addition and in response to a recommendation from the Levy Court Commissioners, the plant has implemented an Occupational Health and Safety program following the ISO 18001 standard that will be audited as well. The ISO audits are expected to occur the week of November 14-18, 2005.

The plant also incorporated the National Biosolids Partnership's (NBP) EMS protocols into its EMS. During the week of October 17-28, the NBP audit will be conducted by KEMA. All interested individuals including County employees are invited to observe and participate in the audit and provide their viewpoints. If you are interested in observing the audit, please contact me at 335-6000 or james.newton@co.kent.de.us.

Certification of the program justifies our high standing and recognition by EPA Region III and DNREC, and it also adds a sense of legitimacy to it and will help us reduce our operating costs and our environmental footprint. **8823**

High Praise

High praise for DYLAN CARRAR, CODY HILLS, DAN McLAUGHLIN, and J.R. SHORT for a letter from the Harrington Fire Captain regarding a house fire last month. The incident involved a parent and two children trapped upstairs and two firefighters suffering from heat exhaustion. "Your dispatchers were always on top of things...they had different requests done so fast and without hesitation, it felt like they were standing next to me," he recalled. *Awesome!!!*

Enhancements eyed for new County complex

(Continued from Page 1)

common guessing game. The new directory from Austin Signs will list room names and numbers on one side for the first floor and on another side have the same information for the second floor and the third side will display the Kent County seal. The directory should be arriving this month.

Three new free-standing metal benches that will be painted the same color as the stair railing have been ordered. One will be placed in the foyer area and two in the rotunda. The exact placement of the benches will be determined after the ATM and Directory are placed. But at least one bench will be placed against the wall next to the Planning Services counter.

There have been more than a few raised eyebrows when walking through the foyer since the arrival of a metal detector and x-ray machine last month.

According to MacDonald, "the machines are to be used in times of heightened security, which will be set by the County Administrator. Both items were purchased with Homeland Security funds. The metal detector is from Ranger and was \$3,745 (we have two). We also have four hand held detectors from Ranger that were \$127 each. The two baggage x-ray machines were purchased from American Security for \$15,680. We will have people trained to operate this equipment in the short term, if we need long term coverage then someone may be hired."

No surprise, but there is way too much ground for the County's few Facilities Management employees to maintain, so lawn care services have been contracted out to Paul Dutton Lawn Care. Any dead plants will be replaced by the County's landscape contractor Springhaus, but at this time there are no plans in the future to add to the landscaping.

New trash containers have finally been placed outside of the complex, so there should be a decrease in coffee cups sitting in the middle of the floor and floating in toilets – I guess they did not know what to do with them. One can is placed outside of the public entrance and the other is at the employee entrance. Small trashcans have been placed in the restrooms, so if one is missing please contact Facilities Management.

During heavy rains in June several offices experienced a few leaks from windows or ceilings. The rain water was apparently coming through the flashing between the bricks. This has been repaired and resolved, according to MacDonald.

There have also been questions about the

EXIT doors that are marked with the red and white signs. If you try to exit through these doors (except for the door by the mail room) an alarm will sound and the lock will release in 10 seconds when you push on the handle. It has to be reset with a key, so don't use them unless a true emergency exists. In the case of a fire, however, the doors will open freely.

In early July many of us brought in fans or made hand-held ones from printer paper due to an air conditioning malfunction. Two chillers went down simultaneously and it quickly got hot and humid in the new building. Rest assured this has been repaired by the manufacturer and should not happen again.

Have you noticed office lights that go out and then on and then out again? Having your lights go off is not an excuse to take a quick nap. And did you ever notice there are some days when the lights in the hallways seem a little dim? Seems there have been some programming issues with the computerized lighting system and it is currently being worked on. If you are in a office or conference room with a motion sensor and it seems to go out on you in a short period of time there's no need to jump and frantically wave your arms in front of it, just call Facilities Management and they can adjust the sensors to stay on longer.

You probably noticed the shiny new foyer floor. It was polished and looks great, but don't look for this to be done to the rest of the terrazzo flooring. The foyer floor had a punch list item to fix and the remaining floors are in good shape.

The Levy Court caucus room has had about 20 chairs surrounding an imaginary table since we moved in, but not anymore. The very large oval table was recently delivered and put into place. The table was the final item needed in order to officially complete the original furniture order for the new building. Microphones and computer jacks are currently being installed in the room.

The number one question has to be "will we be receiving more furniture?" At this time all initially ordered items are now in place. The furniture company is waiting on parts to complete a few repairs on the punch lists. The County Administrator is expected to be meeting with department heads in the near future to talk about office furniture requests and other issues – so let your Director know if you have any special furniture needs.

And finally, there are no plans to put paper towels in the men's restroom, but additional window tinting is being considered for offices.

Employees and families earn ribbons at State Fair

(Continued from Page 3)

Meat Goat - Doe , 3rd place Meat Goat Showmanship - 12 year old, 44 Blue Ribbons from the 4-H Department entries.

Megan Fabi, daughter of JEAN FABI, won 2nd place Pygmy Goat Showmanship - 9 year old, 2nd place Meat Goat Showmanship - 9 year old, 4th place Market Meat Goat, Blue Ribbon - Dress Review, 51 Blue Ribbons from the 4-H Department entries.

JACK FOLEY, Sheriff's Office, entered his photos and received 1st prize in Stop Action and 3rd prize in Wildlife. He loves photography.

CHUCK HURD, Emergency Services, was at the Agriculture Commodities Building on Monday and Tuesday helping to promote the newly formed Delaware Agritourism Association. A group of farmers who are opening up their farms to the public for all kinds of farm events. There are several farms in



Megan Fabi, daughter of Jean Fabi, proudly displays the Blue Ribbon she won at the Delaware State Fair for her First Place Market Hog & Grand Champion Burrow-named "Gordy".

NACo conference focus on workshops

(Continued from Page 11)

the National County Platform to lobby for legislation beneficial to NACo's nearly 3,000 county members.

At the conference, BRET SCOTT was installed as National Association of County Information Officers (NACIO) Second Vice-President. Bret will serve a two year term as Second Vice-President before ascending to First Vice President and eventually President. Bret also closed out NACIO's 2005 Awards of Excellence Competition which he spent the last year serving as Chairman during an awards reception. **9049** **8947** **9558**

COUNTY BIRTHDAYS

(Continued from Page 4)

- 16 Jack Shulties, Public Works/WWF
- 17 Penny Gibbs, Deeds Office
- 20 David Burris, Levy Court President
- 21 Sophie Dear, Administration
- 24 Kenneth Kennedy, Public Works/WWF
- 24 Dylan Carrar, Public Safety/Emer. Comm.
- 25 Cynthia Goldsboro, Sheriff's Office
- 25 Jennifer Graham, Public Safety/EMS
- 27 Kelly Blanchies, Sheriff's Office
- 27 Ralph Neil, Public Safety/EMS
- 27 Patricia Orona, Deeds Office
- 28 Allan Thomas, Public Works/WWF
- 29 Cynthia Johnson, Assessment Office
- 29 Evelyn Jopp, Administration

Kent County who are members, go to www.defunonthefarm.org for a complete list. Or visit Chuck's web site at listeracres.tripod.com.

MARTHA LEWIS of Deeds Office, CHRISTINA MORTON of Inspections and Enforcement, and ANGEL SHORT of Parks and Recreation, all worked in the Grandstands. CHRISTINA did ticket collecting, MARTHA and ANGEL were ushers for all of the shows.

SCOTT TANNER of Inspections and Enforcement saw Larry "The Cable Guy". He was hilarious.

Sydney and Shelby Vincent, daughters of BILL VINCENT, Wastewater Facilities, showed their pygmy goats in the showmanship class and in the breed class. They also showed Meat goats in the showmanship and fitting categories for 9 year olds. They did excellent in their first year of participating with their goats. They also had several blue ribbons from the 4-H department and participated in the pretty animal contest.

Christopher Walton, nephew of CELENE WALTON, Inspections and Enforcement, and KARYN McGONIGLE of Finance, won 2nd place in steer and 3rd in pig showmanship. Christopher was representing Caesar Rodney FFA.

LORETTA WOOTTEN, Clerk of the Peace, won second place in the "pork" recipe contest (entrants were limited to using only 5 ingredients!)

Brandon Yerkes, son of CRYSTAL YERKES of Deeds Office, won the Meat goat fitting category for his age group and also won first place with his Market Meat goat. His goat went to auction.

Big Oak Park near Smyrna closer to reality

By Carl Solberg, Parks Division Manager

Passers by who are traveling north on State Route One have been witness to the considerable earth-moving going on at the Delaware Aerospace Education Foundation (DASEF) and Levy Court Big Oak County Project. Extensive construction activities have been underway since the fall of 2004 including the following project elements.

Levy Court funding has leveraged major grants from the Delaware Coastal Management Program, Natural Resources Conservation Service, DNREC Land & Water Conservation Trust Fund, and US Fish and Wildlife Service to advance the conservation and recreation plan for Big Oak County Park.

After major delays due to wet site conditions and permitting constraints, Kent County Parks Division has completed unique wetland creation and riparian habitat conservation projects. A 450-foot length of the 100-year floodplain along the stream corridor has been restored by removal of approximately 3,000 cubic yards of fill material placed there by the former owner for land reclamation. The restored stream corridor will be vegetatively restored this fall during a volunteer weekend project (to which you can be certain that you will be invited).

The Parks Division also completed construction of a remarkable elevated stream crossing using manually-installed helical anchors. These corkscrew-like foundation supports avoid any soil disturbance and, when construction is conducted during frozen ground conditions, has no effect on the native flora of the wetland. A pedestrian and bicycle trail system is being constructed which will provide Park visitors a 3,200-foot loop trail which includes the scenic 600-foot stream crossing.

A major regional conservation project was brought to 100% completion on Earth Day 2005 when 120 volunteers and staff concluded the planting of the new wetland mosaic that was constructed last fall in Big Oak. With the talented personnel and equipment of the Kent Conservation District, a complex of 60,000 square feet of freshwater wetland was created. It has been planted with over 600 balled and burlap and small container native trees and shrubs. The 9,000 cubic yards of fill material excavated from the site was used to eliminate a 730-foot ditch to create multipurpose recreation fields. With an additional 10,000 cubic yards of unexpected fill material from DASEF these fields are being brought to final grade with topsoil and will be seeded in Au-



gust for public access and use by the summer of 2006.

In this new fiscal year the Levy Court funded \$270,000 for a major public restroom and maintenance building that will supply services to the Park and DASEF visitors by next summer. The engineering for this building is being coordinated by Parks Facilities Specialist WAYNE McCARTY and will replicate the existing restrooms designed and built by the Parks Division at Brecknock County Park, with the addition of an attached Parks maintenance building.

What's in the future for Big Oak? The Parks Division has applied for major funding to supplement County capital funds for a dramatic science-themed playground for youth from 2 to 12 years in age and a large pavilion for picnicking and other public uses. The combined value of the proposed playground and picnic area improvements is \$245,000. Construction of these facilities will be conducted internally by Park Superintendent MIKE RIGBY's Parks Division Operations and Maintenance staff and are intended for completion by the summer of 2006.

A major softball complex and large parking facilities are planned for contracting in the next fiscal year. The Parks Division will engineer and permit the required internal roadway, parking, and stormwater management improvements through this winter and spring. When completed by the summer of 2007 the combined improvements planned and under construction at Big Oak County Park will host active outdoor recreation activities roughly equivalent to twice that which is now available at Brecknock County Park.

The conservation projects will be afforded controlled access and provide field experience opportunities for a variety of passively-oriented recreation. Also, the public exposure to the riparian habitats along the new loop trail will offer a superior and restful walking experience.

SOME ANSWERS TO THOSE NAGGING QUESTIONS

By Allan Kujala, Personnel Director

Q. *Why should anyone use this suggestion box when you edit the questions until they mean something TOTALLY different from what was asked, or you respond to them in our newsletter in a flippant or “wise-assed” manner? We asked this question last month (and it was never addressed), so we will do it again (although we feel you will not respond to this one either!) Why are the all of the closest (and best) parking spaces at the rear of the building reserved for the commissioners? When they are here, it is usually in the evenings after everyone else has gone home, when there is ample parking all around the building. Why are the spaces reserved, when all of the commissioners we have been seeing lately have parked, entered the building, did their business, and left through the front doors of the building? Why can’t there only be a couple of reserved spaces, and the rest used for a better use, like employee parking? (And in case you STILL don’t understand what we are asking, let me make it a little clearer: We don’t care that we have “a lot” of parking spaces around the new Kent County building. We want to know only about the reserved ones at the back of the building!)*

A. The reserved parking spaces are there because the Commissioners want them.

Q. *My blood boiled when I read the question last month about reserved Commissioner parking spaces. I thought your response should have been harsher. Is this employee nuts? The Commissioners are the bosses and they make all the decisions—even how much our raises will be. Frankly, I would be happy if they reserved all the spaces directly in front of the building for I am thankful they were considerate enough not to take desperately needed spaces at the O’Brien building, because they could have if they wanted to.*

A. See question number one. Seems an employee or two found my response unspecific and mean-spirited.

Q. *I often have to work late and notice that around 6 p.m. the air goes off. What can I do about the heat?*

A. With the recent heat wave, I’m sure it has been more than a little uncomfortable. The new HVAC system works on a schedule to reduce energy consumption and related costs. I know I’m not looking forward to my July electric bill. If you plan to be in the

office late on a specific date or regularly, you can contact Dick MacDonald in the Facilities Management Division and he can adjust the HVAC schedule for your office to keep it cool and comfy into the night.

Q. *A co-worker will occasionally say my name in a cutesy way or make up a rhyme. Why can’t she just call me by my name, rather than make a joke?*

A. I’m sure your co-worker means nothing by it—she probably thinks if it as friendly or endearing. The best way to handle it is to let the person know in an equally nice way that you don’t find it cute. I’m sure it will stop.

Q. *My supervisor works with a same grade supervisor from another department and I have noticed that this other supervisor often speaks in condescending terms to my boss. It irks me, but my supervisor seems unfazed by it. What should I do?*

A. It takes all kinds of people to help the County operate efficiently and many have different education levels, personal histories, and cultural backgrounds. In an organization as large as the County, it is important for everyone to learn to work with all kinds of personalities. Those who can do this tend to have great success resolving issues. While, the personality of the visiting supervisor bothers you, it seems not to bother your boss because he doesn’t let it. My advice is not to let it irk you, since your supervisor seems okay with it—he probably values his working relationship with the other supervisor and just ignores it.

Q. *Why does the Fitness Room have two televisions and the lunch room has none?*

A. Good question, perhaps the person who can correct this oversight will read this and take action.

Q. *We employees still at the O’Brien building are starting to feel like step-children. We don’t have central air, the building is dark and lifeless, and we never see other County employees. What is being done?*

A. The State now owns the O’Brien building and we/you are at their mercy. I hope the window AC units are making it more comfortable for you. The Levy Court appears committed to moving Deeds and Wills to the new building whenever imaging is done.