



2011 Kent County Parks & Recreation Strategic Plan

Adopted March 27, 2012

Table of Contents

Introduction	2
Executive Summary.....	3
Progress Since 1991 Master Plan.....	6
Population and Demographics.....	9
Table 1: Population Projections.....	9
Table 2: Age Cohorts.....	10
Existing Facilities	11
Parks.....	11
Table 3: Park Classifications.....	11
Table 4: Existing County Park Facilities.....	12
Kesselring.....	13
St. Jones Greenway.....	13
Historic Resources.....	14
Recreation Programming.....	14
Table 5: Recreation Programming.....	15
Table 6: Recreation Programming Priorities (SCORP 2012)	16
Table 7: Organized League Priorities	16
Community Needs	16
Table 8: Recommended Park Acreage.....	17
SCORP.....	18
Table 9: Park Improvements Ranking.....	19
Table 10: Funding Priorities.....	19
County Survey.....	19
Parks and Recreation Commission	21
Table 11: Parks and Recreation Facility Priorities.....	22
Synopsis.....	22
Transportation Considerations.....	23
Staffing.....	25
Conclusions.....	26
Recommendations.....	27
Potential Projects.....	29
Implementation Schedule and Budget	30
Appendix A: Park Facilities.....	32
Appendix B: Kent County Survey	33

Introduction

Park land, recreation programs, and preserved open space play a significant role in protecting natural resources, make the County attractive for economic development, and preserve citizens' quality of life. A quality coordinated and connected system of parks and recreation facilities provide myriad community benefits including:

"...the establishment of a system of parks and pleasure grounds for a rapidly growing city [county] is one of the most difficult and responsible duties that ever falls for ...[local] government, involving as it does the expenditure of large sums of money, and the construction of many permanent works. The land selected should be accessible to all classes of citizens by walking, driving, riding, or by means of cars; adaptable in the greatest degree for the particular park purposes to be served; [and] inexpensive."

Nolen, John. "Park Systems." City Planning. Ed. John Nolen, Appleton and Company. 1929. 163

- ❖ **Public Health** – by providing opportunities for exercise and functioning to “mitigate climate, air, and water pollution impacts on public health”.¹
- ❖ **Environmental Protection** – by educating the public about the function and value of natural areas as well as “help preserve essential ecological functions and to protect biodiversity...can help shape urban form and buffer incompatible land uses...[and] reduce public costs for stormwater management, flood control, transportation, and other forms of built infrastructure.”²
- ❖ **Social Interaction** – by providing public gathering spaces and affording citizens the opportunity to connect not only with nature but also with each other whether it be neighbors at a nearby playground or the larger community at a municipal or regional park for a special event

- ❖ **Economic Development** – by improving quality of life in the community and providing a competitive advantage in attracting business to the County. Real property values are positively affected, jurisdiction revenues are increased (property tax and tourism based), affluent retirees are attracted and retained, knowledge workers and talent are attracted to live and work, and homebuyers are attracted to purchase homes.³

The design standards, setting, and over-all distribution of public parks should reflect both an intention to convey a sense of place in the greater landscape and provide facilities suitable for a wide range of recreation and leisure activities.

¹ “How Cities Use Parks to Improve Public Health”. *Issue 07 City Parks Forum Briefing Papers*. American Planning Association. Chicago, IL. 2003. 1

² “How Cities Use Parks for Green Infrastructure”. *Issue 05 City Parks Forum Briefing Papers*. American Planning Association, Chicago, IL. 2003. 1

³ “How Cities Use Parks for Economic Development”. *Issue 03 City Parks Forum Briefing Paper*. American Planning Association, Chicago, IL. 2003. 1

Kent County has made significant progress in providing parks and recreation opportunities since completion of the 1991 Master Plan. This Strategic Plan is an effort to review existing resources as they compare to existing and future fitness, cultural, and other leisure time needs of County residents. Furthermore, the Plan will identify capital and operational improvements that will enable the County to serve its residents well into the future.

Executive Summary

In reviewing the existing parks and recreation facilities and available community surveys, the following conclusions were reached:

1. All of the County's parks and recreation programs offer public health, environmental, social, and economic benefits to the community and make Kent County an attractive place to live, work, and play.
2. Kent County has made great strides over the past twenty years in providing its citizens with outstanding parks and recreation facilities, however, resources are limited and the County must capitalize on existing facilities and carefully prioritize new capital projects.
3. The County must continue to strengthen existing and cultivate new partnerships including municipalities, schools, local universities and colleges, and civic organizations.
4. The County developed three parks as recommended in the 1991 Plan and acquired additional land in the Hunn and Kesselring Properties. All of the developed parks are heavily used by the community and without question are assets to the County. The County's commitment to developing excellent park facilities will continue with the development of Kesselring, continuation of the St. Jones Greenway, development of the Hunn Property and, rehabilitation of the Hunn and Brecknock manor houses.
5. According to a recent County survey and poll of the Parks and Recreation Commission indicate that developing walking/jogging paths, water features such as a pool or spray park, playgrounds, and developing an indoor recreation center are high community priorities. Providing access to historic sites, additional picnic areas, hard surface courts for basketball and tennis, and athletic fields appear to be moderate priorities. In addition, access to County parks and connection to pedestrian facilities near them should be a priority.
6. Given the limited scope of the two recent surveys and in order to ensure that the County is meeting the needs of our citizens, a follow-up survey, preferably online, should be developed. In addition, a substantial outreach effort to truly gauge the community's parks and recreation priorities would be helpful in prioritizing future capital projects.

Formatted: Indent: Left: 18 pt

7. Additional park land should be considered in the central part of the County to serve the recently developed area around Magnolia. Location near developed areas and access to any new park land particularly for pedestrians and bicyclists should be a primary consideration.
8. Opportunities for community engagement exist and have the benefit of building additional public support for the County's parks and recreation programs and recruiting potential volunteers to assist with both fundraising and maintenance for the park lands. Particularly in difficult economic times, community outreach and partnerships with both public and private organizations is imperative. Fundraising opportunities must be explored.

In evaluating the conclusions, a number of recommendations were developed including:

1. Conduct a series of public outreach meetings throughout the County to get feedback on direction and priorities of parks and recreation. Prior to the public outreach meetings, develop list of future amenities and the associated capital and operating costs for current and future projects. Public response will provide some guidance in allocating funds within the capital budget. All of the projects listed below should be included for discussion in the outreach effort.
2. Kesselring Property
 - (a) Develop master plan
 - (b) Construct walking/jogging path connected to Brecknock Park
 - (c) Construction of parking areas
 - (d) Construction of Pavilions
 - (e) Construction of Playground
 - (f) Addition of a maintenance worker
3. St. Jones Greenway
 - (a) Update Greenway Plan
 - (b) Initiate community outreach effort
 - (c) Acquire Easements
 - (d) Prioritize construction projects
 - (e) Create fund within Capital Budget
 - (f) Develop partnerships and explore fundraising opportunities with additional organizations:
 - (i) Kent County Tourism
 - (ii) Dover/Kent County MPO
 - (iii) DelDOT
 - (iv) DNREC
 - (v) Delaware Nature Conservancy

Formatted: Justified, Indent: Left: 36 pt, Space After: 0 pt

-
4. Historic Resources
 - (a) Develop a Memorandum of Agreement with the Friends of Historic Camden for assessment, rehabilitation, and future use of the Brecknock Manor House.
 - (b) Coordinate with Delaware State University review the existing Memorandum of Understanding and prioritize further study and capital improvements based upon the conditions assessment for Wildcat Manor.
 - (c) Prioritize implementation of improvements to each house
 - (d) Develop partnerships and explore fundraising opportunities with additional organizations:
 - (i) Friends of Historic Camden
 - (ii) Preservation Delaware
 - (iii) State Historic Preservation Office
 - (iv) University of Delaware
 - (v) Kent County Tourism
 - (e) Explore fundraising opportunities
 - (f) Develop an historic resources guidebook
 - (g) Create fund within Capital Budget
 5. Community Engagement
 - (a) Make Parks and Recreation more visible and enlist the support of the community (“gift catalog”, volunteer identification and recognition program, memorial tree dedication program, “adopt a park” program,).
 - (b) Develop a Friends of the Park program similar to the Friends of the Library organization.
 - (c) With the economic development benefits of a superior parks and recreation program, staff should coordinate with the County’s newly created Economic Development Office to advertise the parks and recreation opportunities in Kent County as part of the overall economic development effort.
 6. Recreation Programming
 - (a) Continue to monitor interest in individual programs and incorporate enough variety to accommodate all segments of the population.
 - (b) Continue building and maintaining relationships with organizations that host programs, particularly the school districts.
 - (c) An indoor recreation facility should also incorporate enough space to house recreation programs as well as league and individual play.
 7. Staffing
 - (a) Explore possibility of certification and continuing education program.
 - (b) Explore accreditation of the Department as a whole.
 8. Continue to coordinate with DeIDOT and the Dover/Kent County MPO to ensure transportation projects related to the St. Jones Greenway as well as pedestrian and bicycle access to County parks remain a priority.

Potential Projects

- 1. Indoor Recreation Center
 - (a) Determine location
 - (b) Contract with a consultant to develop a master plan for the facility
 - (c) Funding Options
 - (i) Capital Budget (possible delay in construction or use of reserve funds)
 - (ii) Bond Issue
 - (iii) Fundraising

Formatted: Justified, Indent: Left: 18 pt, Hanging: 27 pt, Space After: 0 pt, Outline numbered + Level: 2 + Numbering Style: a, b, c, ... + Start at: 1 + Alignment: Left + Aligned at: 18 pt + Tab after: 82.8 pt + Indent at: 36 pt, Tabs: 45 pt, Left + Not at 82.8 pt

- 2. Spray Park
 - (a) Identify location
 - (b) Dedicated item within the Capital Budget
 - (c) RFP for design and construction

Formatted: Font: Calibri

- 3. Additional Parkland in Magnolia Area
 - (a) Create fund within Capital Budget
 - (b) Establish a Park Endowment Fund for land acquisition supported by donations and fundraisers

Formatted: Indent: Left: 18 pt

- 4. Swimming Pool
 - (a) Estimate potential development and maintenance costs
 - (b) Identify potential partners such as state agencies and municipalities
 - (c) Identify potential locations within the County
 - (d) Dedicated item within the Capital Budget

Progress Since 1991 Master Plan

Kent County Levy Court adopted a Parks, Recreation and Open Space Master Plan on August 13, 1991 and has been successful in implementing a significant number of the Plan’s recommendations. Indeed, in many cases, the County has exceeded the expectations articulated in the 1991 Plan. A synopsis of the Plan recommendations and subsequent implementation actions is provided below.

- 1. Establish an open space system which 1) protects and preserves key natural resources throughout the County, such as floodplains and unique environmentally sensitive areas, from unwarranted development; and 2) provides residents with a positive feeling about the attractiveness of the County:
 - a. Establish a St. Jones Greenway Commission;
 - b. Participate in the Delaware Greenspace Program;
 - c. Protect and preserve floodplains, wetlands, and woodlands; and
 - d. Protect and preserve the County’s prime agricultural lands/increase the minimum lot size of the Agricultural Conservation zoning district.

Since 1991, the County has established a St. Jones Greenway Commission and initiated development of the Greenway; participates in the Delaware Greenspace Program, adopted provisions prohibiting subdivision of floodplains and wetlands; adopted provisions protecting woodlands; created a Growth Zone Overlay District directing future growth; and decreased the permitted density outside of the Growth Zone.

2. Provide adequate active and passive park areas to meet the needs of County residents:
 - a. Develop the Goggin property as a major County park;
 - b. Develop an indoor recreation facility;
 - c. Develop three County parks (30-40 acres each);
 - d. Develop volunteer "Friends of the Park" organizations;
 - e. Enhance the neighborhood open space program by developing a land acquisition program which recognizes the need for public ownership of land devoted to passive and active recreation and preservation of environmentally sensitive areas; and
 - f. Develop a cash in lieu of neighborhood open space program.

The Goggin property has been successfully developed as the heavily used Brecknock Park. The County has also developed Big Oak and Browns Branch County Parks, purchased the Hunn Conservation Area, further developed Tidbury Creek Park, and developed Lebanon Landing Fishing, Boating Access and Recreation Area. More recently the County purchased a portion of the Kesselring Farm near Brecknock Park. The County also included a fee in lieu of open space provision in the Subdivision and Land Development regulations. An indoor recreation facility is being considered for the Kesselring property.

3. Provide sufficient active and passive recreation facilities to meet the needs of County residents:
 - a. Construct basketball, tennis, soccer, Little League, and swimming facilities in accordance with National Recreation and Park Association (NRPA); and
 - b. Continue to use school facilities as available for recreation programming and formalize such agreements with the various school districts.

The County has developed baseball softball fields and multi purpose fields in each of the County parks and continues to coordinate with the school districts for provide space for recreation programming.

4. Provide programs to meet the recreation needs of all residents regardless of age or gender:
 - a. Broaden programming by offering programs in the hobbies, nature, service, and social categories; and
 - b. Establish programs which involve the historic resources of the County.

The Department offers a wide variety of programming for individuals of all ages and skill types. Programs range from sports to hobbies to various bus trips. The Division has also been working with Friends of Historic Camden to highlight the Manor House at Brecknock Park.

5. Maintain parks and recreation facilities to the highest level possible:
 - a. Hire a Park Maintenance Supervisor;
 - b. Develop a Park Maintenance Management Program;
 - c. Utilize Supervisor position to perform periodic security checks at the parks; and
 - d. Consider security concerns in designing parks.

The Department has added a number of maintenance positions to maintain the County parks.

6. Provide the most efficient system to meet the recreation and parks needs of all county residents:
 - a. Revise County subdivision and land development regulations to require open space in all development regardless of size;
 - b. Permit fee in lieu of providing open space as warranted; and
 - c. Ensure historic and cultural factors are integrated into the development review process.

The County subdivision and land development regulations have been revised to require open space in all residential projects and permit fee in lieu of open space with the approval of Levy Court. In addition, cultural and historic resources are taken into consideration in the subdivision and land development review process.

7. Maintain parks and recreation as a vital county service to residents:
 - a. Develop a five-year capital budgeting program;
 - b. Establish a Park Endowment Fund for land acquisition supported by donations and fundraisers;
 - c. Encourage public/private partnerships to enhance recreation opportunities and services; and
 - d. Effectively utilize federal and state programs.

The Department develops a capital budget as part of the annual budgeting process. This Plan will assist in better defining the capital plan. In addition, the Department has made excellent use of federal and state resources in purchasing land and developing parks.

8. Make every County resident aware of all parks and recreation activities available in the County:
 - a. Develop a logo for Kent County Parks and Recreation;

- b. Make Parks and Recreation more visible and enlist the support of the community (“gift catalog”, volunteer identification and recognition program, memorial tree dedication program, “adopt a park” program);
- c. Develop an historic resources guidebook; and
- d. Ensure that special populations, including the disabled and elderly, have access to and use of public parks, facilities, and programs.

The Department has developed a logo and publishes brochures throughout the year with the recreation program schedule which are sent to every home within the County. In addition, the County offers a variety of programs for all ages and abilities.

Overall, implementation of the 1991 can be considered a success.

Population and Demographics

To adequately serve the population of Kent County, it is essential to know the characteristics of the existing population and the projected population.

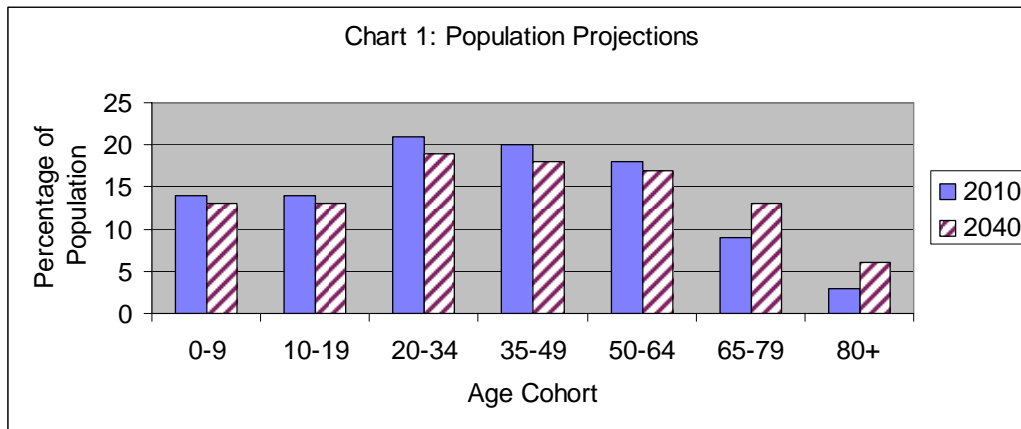
Age Cohort	2010	2020	2030	2040	Percent Increase (2010-2040)
0-9	22,544	24,951	25,510	27,480	22%
10-19	22,322	23,758	25,924	26,436	18%
20-34	33,698	35,914	36,377	39,801	18%
35-49	32,243	32,587	37,618	36,988	15%
50-64	28,957	34,312	30,882	35,457	22%
65-79	15,051	20,672	27,695	26,642	77%
80+	5,243	6,623	8,847	12,148	132%
Total	160,058	178,817	192,853	204,952	28%

⁴ 2010 estimates provided by the Delaware Population Consortium

⁵ The 2010 decennial census reveals a total population of 162,310

Table 2: Age Cohorts⁶

Age Cohort	2010	Percentage of Population	Age Cohort	2040	Percentage of Population
0-9	22,544	14%	0-9	27,480	13%
10-19	22,322	14%	10-19	26,436	13%
20-34	33,698	21%	20-34	39,801	19%
35-49	32,243	20%	35-49	36,988	18%
50-64	28,957	18%	50-64	35,457	17%
65-79	15,051	9%	65-79	26,642	13%
80+	5,243	3%	80+	12,148	6%
	160,058			204,952	



The population within the County is anticipated to continue growing at a steady pace. The County should continue to coordinate with municipalities and the State to ensure adequate park and recreation opportunities exist to serve the population. In addition, as shown in Chart 1 above, the population is aging. As parks are designed and recreation programs are developed, the County must be mindful to plan for all age groups so that services remain accessible to all ages and abilities.

⁶ 2010 estimates provided by the Delaware Population Consortium

Existing Facilities

Parks

The residents of Kent County are also served by a variety of state and municipal parks and open space resources ranging from small neighborhood parks to significant conservation areas. The National Recreation and Parks Association (NRPA) separates parks into three categories based upon acreage and size of the population served (See Table 3 below).

Table 3: Park Classifications			
	Facilities	Approximate Size	Service Area
Neighborhood	playgrounds, hard-surface courts; can be associated with schools	1-5 acres	Up to ½ mile
Community	playgrounds, hard surface courts, picnic facilities, athletic fields	10-20 acres	1/3 to 3 miles
County-wide	unique natural settings; may be preserved in a natural state	25+ acres	Entire County

Kent County is served by a significant number and wide variety of park facilities fitting each of the above classifications. Appendix A: Park Facilities lists each of the Neighborhood, Community, and County-wide Park Facilities including all of the County parks, municipal parks, and larger state owned parks such as Killens Pond and the St. Jones Reserve. Each of the parks is also identified on Map 1: Recreation Facilities.

The County owns four developed parks (Brecknock, Browns Branch, Big Oak, and Tidbury), one park planned for development (Kesslering), Lebanon Landing boat ramp and fishing pier, and the Hunn Conservation Area. The County also owns 18 acres of the Lewis Farm dedicated as part of a subdivision approval. The property is currently leased by the Central Delaware Soccer Association and is improved with five soccer fields and a parking lot. The County holdings include a variety of improvements including athletic fields, historic resources, playgrounds, and walking trails. Table 4 below includes a detailed list of improvements for each park.

Table 4: Existing County Park Facilities	
<i>Brecknock Park</i> 86 Acres	
Nature Trail (Natural Dirt), Nature Trail (Stone Dust), Benches (8), Playground (2-5), Benches (3), Playground (5-12), Benches (4), Bike racks (2), Exercise equipment, Restrooms, Horseshoe Pit Sets (16), Youth Softball Fields (2), Bleachers (4), Player Bleaches (4), Multipurpose Sport Fields (3), Sand Volleyball Courts (2), Benches (4), Trail Fitness Equipment Area, Nature Center, Pavilion (60), Picnic Tables (8), Pavilion (70), Picnic Tables (8), Drinking Fountain, Native Plant Rain Garden, Historic Home Site, Maintenance Building, Storage Facility (Tenant House), Wetland Boardwalks, Parking Lots (3), Information Kiosk, Carry In Carry Out Stations, Pet Sanitation Stations	
<i>Tidbury Park</i> 18 Acres	
Nature Trail (Natural Dirt), Benches (4), Nature Trail (Stone Dust), Pavilion (40), Picnic Tables (6), Grill, Playground (5-12), Dog Park, Fishing Pond, Parking Lot (1), Carry In Carry Out Stations, Pet Sanitation Stations, Manual Well, Water Pumps (2), Information Kiosk	
<i>Browns Branch Park</i> 78 acres	
Parking Lot, Playground (2-5), Benches (3), Playground (5-12), Benches (5), Bike Rack, Restrooms, Maintenance Building, Softball Fields (3), Bleachers (3), Player Benches (6), Multipurpose Sports Fields (2), Football Field, Horseshoe Pit Sets (8), Sand Volleyball Courts (2), Nature Trail (Natural Dirt), Picnic Area (3), Picnic Tables (16), Grills (10), Wetland Boardwalk, Carry In Carry Out Stations, Pet Sanitation Stations	
<i>Big Oak Park</i> 84 Acres	
Trail (Paved), Nature Trail (Stone Dust), Benches (5), Bike Racks (2), Playground (5-12), Playground (2-5), Playground Benches (16), Climbing Boulder, Swing Set (5-12), Swing Set (2-5), Pavilion (80 person), Grills (4), Restrooms, Drinking Fountain (Human & Pets), Softball Fields (3), Bleachers (3), Player benchers (6), Irrigation System, Multipurpose Sports Fields (2), Bleachers (1), Maintenance Building, Storage Facility, Wetland Boardwalk, Parking Lots (3), Entrance gates (3), Information Kiosks (2), Carry In Carry Out Stations, Pet Sanitation Stations (3)	
<i>Kesselring</i> 53 Acres	
Undeveloped	
<i>Lebanon Landing</i> 5 Acres	
Parking Lot, Boat Trailer Parking (1), Boat Ramp, Fishing Pier, Picnic Area, Picnic Tables (3), Bench (2), Information Kiosk, Carry In Carry Out Stations	
<i>Hunn Conservation Area</i> 172 Acres	
Historic Home Site	
<i>St. Jones Greenway</i> 14 miles (3 miles completed)	

Formatted: Font: Calibri, Not Highlight

Kesselring

The Kesselring property was purchased in 2010 and is adjacent to Brecknock Park as well as the recently approved Boy Scouts of America camp property. Kesselring can be connected to Brecknock Park via a trail system and there is the possibility of sharing some of the Boy Scouts improvements for County programming. The property is also being considered as the location of an indoor recreation facility.

Once the decision regarding the location of an indoor recreation center is made, a concept plan for the Kesselring property should be completed. Given the overwhelming community interest in walking and jogging paths, completion of the path should be a priority. The path could also fit into the MPO's recommended Camden-Dover connection discussed below. Other improvements for the park such as multi-purpose fields, playgrounds, and pavilions should also be addressed in the concept plan.

St. Jones Greenway

In 1998, the County developed a plan for the St. Jones River Greenway - a planned 14-mile long river-side pathway linking the Greater Dover, Central Kent County area to the Delaware Bay. The Greenway will connect isolated residential communities, the City of Dover and recreation areas along the St. Jones River. The purpose of the Greenway is to:

- ❖ Conserve sensitive natural features;
- ❖ Improve water quality;
- ❖ Increase environmental education;
- ❖ Provide outdoor recreation opportunities
- ❖ Provide links for non-motorized transportation between activity centers; and
- ❖ Enhance the local economy.⁷

Kent County residents will have access to a pathway designed for pedestrians and bicyclists; providing a choice of a non-vehicular means of commuting to work, accessing services and visiting family and friends. Three miles of the path had been completed in two phases with multiple DNREC and DelDOT Transportation Enhancement Program (TEP) funding.

The 3-mile long Isaac Segment has been completed, however, construction of the greenway path has stalled in recent years due to the challenges of crossing the St. Jones River. Recently interest in the project has rekindled. Portions of the path are included in the recommendations of the Dover/Kent County MPO Regional Bike Plan with a connection between Silver Lake and Isaac's Branch a top priority. Ultimately, alternatives to constructing a new bridge such as modifications to the existing vehicular bridge must be explored and the relationship between Community Services and the MPO as the agency who prioritizes transportation projects should be cultivated.

⁷ St. Jones River Greenway Plan, Kent County, DE. Urban Research and Development Corporation, Bethlehem, PA. October 1998.

The original plan for the St. Jones River Greenway was developed in 1998. While the proposed alignment of the Greenway is still relevant, updating the plan to account for development activity and public improvements over the last thirteen years might prove helpful in continuing with construction of the trail system. A new project prioritization including estimated costs and potential partners should also be included. In addition, community outreach along the Greenway and easement acquisition should be a priority.

Historic Resources

Surveys have revealed a distinct interest in visiting historic properties and Kent County owns two such resources in the Brecknock Park and Hunn Property Manor Houses. Neither of the structures is in condition to be regularly open to the public or used for any other purpose such as office space or visitors center.

With respect to the Goggin House at Brecknock, the County has focused on maintenance and repair including replacement of the roof. Recently, though, the Levy Court was approached by the Friends of Historic Camden with a proposal of partnership to restore the house. The first proposed action is the completion of an updated conditions assessment with prioritization and cost estimates. Staff is working with the Friends of Historic Camden to develop a Memorandum of Understanding to formalize the partnership and enable the non-profit to fundraise for the project. In addition, following the completion of a conditions assessment, Levy Court should include rehabilitation of the house in the capital budget to be funded as resources are available.

With respect to the Hunn Manor House or Wildcat Manor, the County has already entered into a 99-year lease with Delaware State University for the purpose of the University designing, rehabilitating, and re-using the existing Manor House for education and interpretive purposes and constructing educational and historic interpretive amenities⁸. An initial conditions assessment has been completed and a new roof installed. There is some interest in reviewing and potentially revising the existing memorandum of agreement and 99-year lease in favor of a long term partnership between the University and the County. The County should request a progress report from the University and discuss options for moving forward and potential funding sources. Identifying additional partners and allocating funds as available in the capital budget for rehabilitating the Manor House should be considered

Recreation Programming

The Department of Community Services provides a wide variety of recreation programming throughout the year. The Department has steadily expanded its offerings to keep up with demand and ensure that their programming reflects the diverse interests and abilities of the County's citizens.

⁸ Lease agreement between Kent County and Delaware State University

Table 5: Recreation Programming

	2008	2009	2010	Percent Increase/Decrease 2008 - 2010
Tot Programs	892	961	797	-11%
Youth Programs	783	751	501	-36%
Specialty Camps	261	254	277	6%
Summer Day Camps	1244	727	364	-71%
Adult Programs	231	222	271	17%
Fitness Programs	810	901	1031	27%
Trips	2314	2133	2090	-10%
Special Events	2996	1753	3489	16%
Leagues	74	47	55	-26%

Some categories of programs have seen a marked decline in participation while others remain steady or are increasing. Summer day camps have seen a 71% decrease in attendance some of which is attributable to a lack of venues for the programs and growing interest in specific activity camps. Participation in Tot, Youth, and League activities has seen a significant decrease overall but the swimming, gymnastic, Tae Kwon Do, and flag football programs have seen steady or increase attendance as have the Spring Horseshoe League and the Golf League. As suggested above, the Specialty Camps have seen regular attendance particularly the Rider/Horsemanship, SPCA Animals as Friends, ½ Day Golf, and British Soccer Camp. Participation in Adult Programs has increased markedly particularly in Arts and Crafts and the Beginner Golf Clinic. Likewise, the Fitness Programs experienced a 27% increase in participants between 2008 and 2010 with particular interest in Aqua Aerobic and Yoga.

Participation in Bus Trips has declined slightly in the last three years although trips to Baltimore's Inner Harbor, Mount Vernon, Baseball games, New York City (summer) and Washington DC remain popular. Finally, attendance at Special Events such as Fright Night and the Halloween Fantasy Trail appear to be growing in popularity but are very much impacted by weather conditions.

The results of the phone survey completed as part of the 2012 State Comprehensive Outdoor Recreation Plan⁹ revealed the following programming priorities among Kent County citizens:

⁹ Outdoor Recreation in Delaware: Survey and Report for the State Comprehensive Outdoor Recreation Plan, completed by Responsive Management for the Department of Natural Resources and Environmental Control, Division of Parks and Recreation, 411 Kent County respondents, conducted August 2011.

Table 6: Recreation Programming Priorities (SCORP 2012)

	Very Important	Somewhat Important	Not Important	Don't Know
Outdoor Recreation for ages 13-17	73%	15%	7%	5%
Outdoor Recreation for persons with disabilities	70%	18%	4%	8%
Outdoor Recreation for ages 4-12	67%	18%	9%	6%
Historic Education Programs	49%	39%	10%	2%
Nature Education	55%	37%	7%	2%
Outdoor Programs for Seniors	55%	25%	11%	9%
Organized Sports Leagues	44%	27%	25%	4%
Cultural and Arts Programs	42%	37%	17%	4%

Two hundred seventy-three of the 411 Kent County respondents indicated an interest in more organized leagues for team sports according to the following ranking:

Table 7: Organized League Priorities (SCORP 2012)

Football	25%	Lacrosse	11%
Baseball	23%	Hockey	7%
Soccer	22%	Field Hockey	6%
Basketball	21%	Tennis	2%
Softball	16%	Swimming	1%
Volleyball	11%	Golf	1%

Ultimately, the survey data will aid in designing and scheduling recreation programs but it is essential that the Department continue to monitor interest in individual programs and incorporate enough variety to accommodate all segments of the population. In addition, the success of some programs is affected by the availability of host venues. The County must continue building and maintaining relationships with organizations that host our programs, particularly the school districts. An indoor recreation facility should also incorporate enough space to house recreation programs as well as league and individual play.

Community Needs

With respect to park facilities, The National Recreation and Parks Association (NRPA) provides acreage recommendations for each classification of park based upon population. Table 7 below illustrates how Kent County compares to the recommendations of the NRPA.

Table 8: Recommended Park Acreage				
	Acres/1,000 Population	2010 Acreage Population 162,310	2040 Acreage Population 204,952	Existing Acreage (approximate)
Neighborhood	2	325	410	43
Community	6	974	1,230	6,688
County-wide	12	1,948	2,459	40,241

The acreage totals above are based upon the parks listed in the 2008 Statewide Comprehensive Outdoor Recreation Plan (SCORP) and acreage estimates using the County's Geographic Information System. It should also be noted that there are approximately 1,050 acres of active recreation areas associated with local schools that are open to the public and can serve as either neighborhood or community parks. In addition, there are nearly 350 acres of active open space included in recorded subdivisions in the unincorporated area of the County. Just in terms of raw acreage, the County appears to include enough park and conservation land to adequately serve the public well into the future.

As demonstrated in the Population and Demographics Section above, however, the County has grown significantly in the past twenty years and not all developing areas are served by a nearby County park. In particular, the central part of the County near Magnolia has experienced significant suburban development and does not have easy access to a County park (See Map 2). In addition, the municipalities in the area are relatively small as compared to Dover, Smyrna, and Milford and do not offer significant park or recreation opportunities. As new parkland is acquired, it is recommended the County look for land in the Magnolia area and ensures that the park is accessible not only by vehicle but also by pedestrians.

In selecting additional park land, the following principle should be considered:

1. To acquire those easily accessible small tracts in different parts of the city [or county] which may most cheaply be adapted to serve as local playgrounds, neighborhood or recreation centers.
2. To seek also some moderately large tracts, even though less accessible for the present generation, provided they are capable of conversion at relatively small cost, which will have the beauty of natural scenery.
3. To acquire property for large parks in advance of a general settlement of the neighborhood.

4. To distribute the parks and playgrounds over the city [or county] in such a way as to give the maximum of use to the people who will be called upon to pay for their acquisition, development, and maintenance.¹⁰

It is recommended that any additional park land be located so as to be accessible to the greatest number of people via a variety of transportation alternatives including car, bicycle, and on foot. The ability to connect to existing public facilities such as schools and existing parkland should also be considered.

In addition to the need for additional park land, the question remains as to how the acreage is developed and what new or additional improvements might better serve the population. A number of sources were used to ascertain the recreation needs of the County population including the 2008 SCORP, a survey conducted by the Department of Community Services, and the input of the County Parks and Recreation Commission.

SCORP

According to the results of the phone survey completed as part of the 2012 State Comprehensive Outdoor Recreation Plan, 63% of Kent County residents rank outdoor recreation as very important to them personally. The most popular outdoor recreation activity among Kent County citizens is walking/jogging (34% do so as one of their top three activities). Other activities with at least 10% include bicycling (16%), swimming at the beach (14%), dog walking (13%), fishing (12%), and gardening (10%).

When asked which activities they expected to participate in within the next twelve months, the most popular were walking/jogging (75%); swimming in a pool (60%); swimming at the beach (59%); gardening (54%); bicycling, picnicking, and fishing (each 53%); and visiting historic sites (51%).

Of particular interest is that citizens were very clear in their support of parks and recreation despite current economic challenges. When asked if public recreation programs are a luxury rather than a necessity, 61% of citizens strongly disagreed or moderately disagreed. Furthermore, when asked if parks, open space, and conservation areas should be budget priorities even during economic hard times, 68% percent of respondents either strongly or moderately agreed.

One hundred fifteen of the 411 Kent County respondents named specific improvements they would like added to a park in their community:

¹⁰ Nolen, John. "Park Systems." City Planning. Ed. John Nolen. Appleton and Company, 1929. 163

Table 9: Park Improvements Ranking

Outdoor public swimming pools	23%	Boating access in coastal waters	2%
Improved amenities	17%	Boating access in fresh water	2%
Indoor recreation	16%	Campgrounds	2%
Playgrounds for ages 2 to 5	13%	Fishing piers	2%
Playgrounds for ages 6 to 12	10%	Outdoor basketball courts	2%
Restrooms	8%	Public golf courses	2%
Biking paths	6%	Public tennis courts	2%
Hiking/walking trails	4%	Skateboarding/BMX facilities	1%
Paved walkways	4%	Access for canoes and kayaks	1%
Baseball fields	4%	Mountain biking trails	1%
Community gardens	3%	Public gathering places/shelters	1%
Fishing areas	3%	Soccer fields	1%
Off-leash dog areas	3%	Softball fields	0%
Football fields	3%	Horse trails	0%
Boating access in coastal waters	2%	Water park	

While there is clearly community support for parks, recreation, and open space within the County, there is also an emphasis on improving existing resources (64%) rather than investing in new facilities (30%). With respect to funding priorities, the survey revealed a strong interest in investing in bike and pedestrian pathways between work, school, shopping, and neighborhoods as well as funding for existing public parks. Less emphasis was placed on land acquisition.

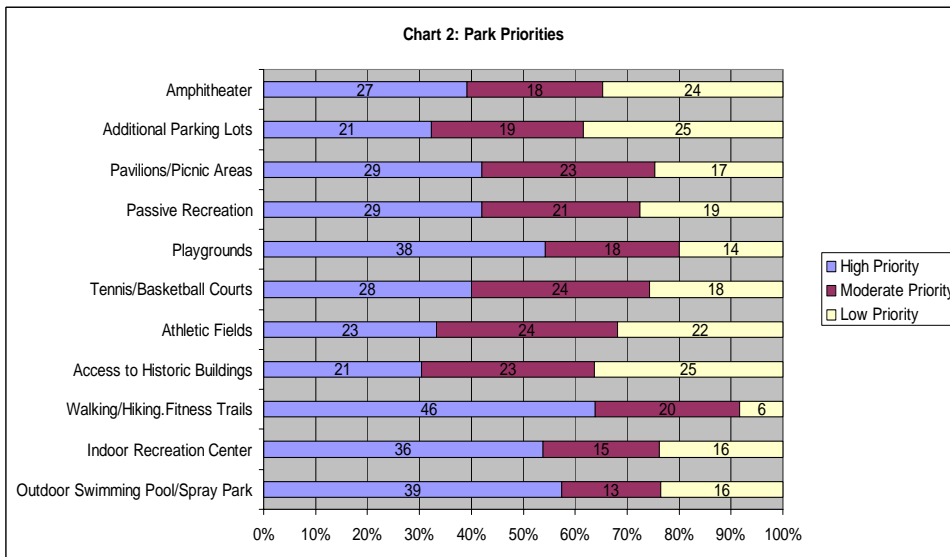
Table 10: Funding Priorities

	Very Important	Somewhat Important	Not Important	Don't Know
Bike and Pedestrian pathways between Work, School, Shopping, and Neighborhoods	71%	19%	8%	2%
Funding for Public Parks	65%	30%	4%	1%
Acquiring Land	53%	31%	14%	2%

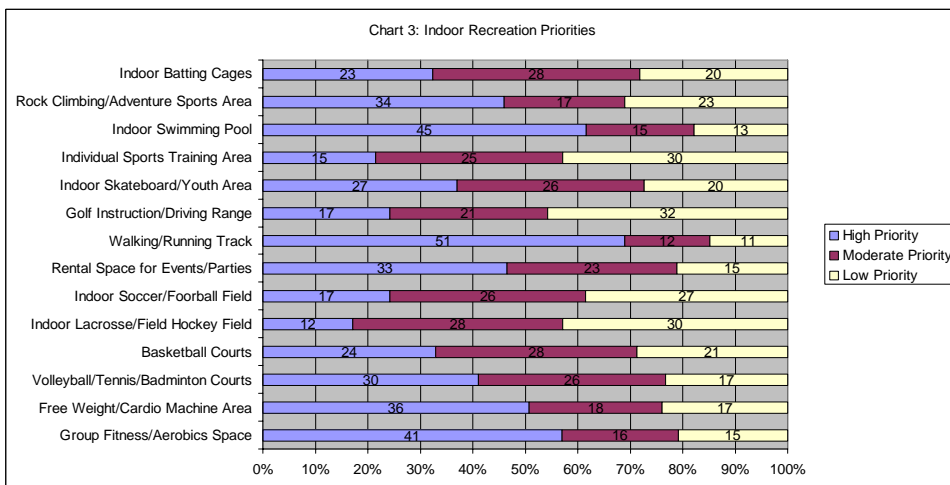
County Survey

The Community Services Department conducted a mail-in survey in the Summer 2011 edition of the Parks and Recreation Brochure. The purpose of the survey was to gauge the community's interest in various park facilities and recreation programming within the County (see Appendix B for the complete survey and results). The Department received 76 responses that generally matched those from the SCORP.

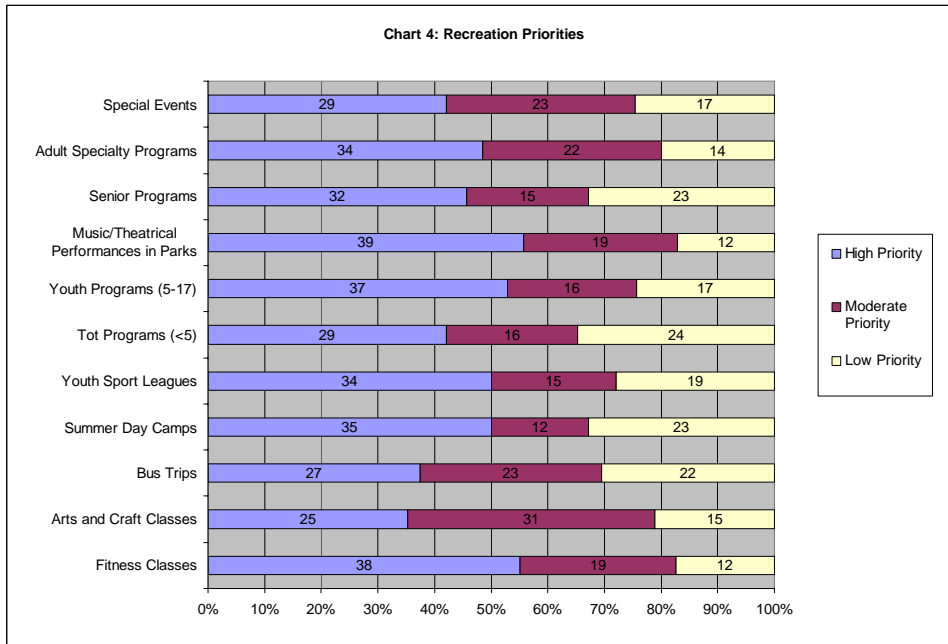
With respect to how respondents rated the need for different types of park facilities, there is a clear interest in walking and jogging facilities as well as a pool/spray park, playgrounds, and an indoor recreation center.



When asked what types of amenities should be included in an indoor recreation facility the responses demonstrated a clear interest in a walking/running track followed by an indoor swimming pool, group fitness/aerobic space, free weight/cardio machine area, and rock climbing/adventure sports area.



With respect to recreation programs, there appears to be a strong interest in summer camps, fitness classes, youth programs, and musical/theatrical performances in the parks. The Department can continue to track interest in particular programs based upon registration. It should be noted also that one of the challenges in providing recreation programming is securing suitable spaces. The Department has experienced particular difficulty in securing space in various school districts. It might be beneficial if the County's elected officials opened a dialogue with the various state and school district representatives regarding the use of publicly funded buildings by the public for recreational programming.



Parks and Recreation Commission

In recognition of their connection to the community and participation in parks and recreation activities, the Parks and Recreation Commission were also asked to prioritize the same list of activities included in the SCORP survey.

Table 11: Parks and Recreation Facility Priorities

High Priorities	Moderate Priorities	Low Priorities
Walking or Jogging Paths	Access to Historic Sites	Hunting Areas
Bike Paths	Hiking Trails	ATV Trails
Beach Access	Lacrosse Fields	Disc Golf Courses
Open Space/Passive Recreation	Kayak/Canoe Access	Golf Courses
Fishing Areas	Mountain Biking Trails	Powerboat Access
Playgrounds	Soccer Fields	Roller Hockey Areas
Picnic Areas	Football Fields	Equestrian Trails
Basketball Courts	Tennis Courts	
Baseball/Softball Fields	Volleyball Courts	
Water Parks/Spray Park	Dog Parks	
Indoor Recreation Facility	Rollerblading/Roller-skating Areas	
	Skate Parks	
	Nature Programs	
	Swimming Pools	
	Camping Areas	

The priorities of the Parks and Recreation Commission are largely the same as those identified by the SCORP survey. The Commission remains committed to construction of an indoor recreation facility as well. It should be noted that the Commission focused primarily on the facilities that would be provided by the County exclusively rather than state or municipal agencies which can explain some of the differences between the two lists.

Synopsis

Overall, developing walking/jogging paths, water features such as a pool or spray park, playgrounds, and developing an indoor recreation center appear to be high community priorities. Providing access to historic sites, additional picnic areas, bike paths, and athletic fields appear to be moderate priorities. With respect to an indoor recreation center, the development of such a facility was included as a goal in the 1991 Master Plan and remains an ambition of the Parks and Recreation Commission and the Levy Court.

Given the relatively small samples used in both the County and State surveys, conducting a more significant public outreach effort is recommended prior to initiating any of the more substantial park improvements. Community meetings to ascertain the public’s interest in projects such as an indoor recreation facility, additional park land, or spray park/pool will provide additional confidence as the County develops its capital budget over the long term.

One of the first questions for consideration is where a possible indoor recreation facility should be located. Land is available at the newly purchased Kesselring property but Levy Court should

officially endorse the location before expending funds for planning. One argument for the Kesselring location is that it is centrally located however since there is already an indoor recreation facility nearby in the City of Dover, a facility elsewhere in the County might be beneficial.

Once the location is determined, a planning exercise to determine the elements to be included in the facility, its design, site improvements, and future expansion opportunities should be conducted. Depending on the desired elements and size of the building, a phasing schedule allowing for additions to the building should be considered. Once a plan for the facility is endorsed by Levy Court, timing and funding options must be considered. The Levy Court could delay construction and continuing to allocate funds each fiscal year as available. Alternatively, a bond could be floated for the project although the Levy Court should be cautious in taking on debt for the project. It is unknown that the facility will be self supporting in terms of long term maintenance and staffing or earn enough to repay debt.

With respect to a water feature at one or more of the County parks, there is clearly an interest among County citizens, however, the cost of construction and maintenance of a swimming pool is likely beyond the capability of the County at this point particularly with the priority of constructing an indoor recreation center. A possible short term solution is construction of a spray park at one of the parks. There are innumerable designs that range in price from \$40,000 to \$300,000. It is recommended that the Parks and Recreation Staff develop a concept design with cost estimates for consideration by the Parks and Recreation Commission and the Levy Court followed by the traditional Request for Proposals process. In the long term, the County should examine a partnership with one or more of the municipalities to provide a public pool within the County. The costs and benefits of an outdoor facility versus an indoor facility should be examined. In the meantime, the creation of a capital fund to add to each fiscal year as funds are available is recommended.

Transportation Considerations

Access to County parks is as important as the parks themselves. While the majority of traffic to the parks is vehicular, there is a growing interest in alternative transportation options. In addition, several of the parks are in urban/suburban areas that can support bicycle and pedestrian traffic. Furthermore, with the obvious community interest in walking and biking trails, there is an opportunity for the County to coordinate with other agencies to connect trails within the parks to a wider network of trails.

The Delaware Department of Natural Resources and Environmental Control, Recreational Trails Program, Delaware Work Program includes two relevant goals:

- ❖ Create linkages from state parks to other adjoining park lands and to adjacent communities where feasible, without creating environmental impacts; and

- ❖ Coordinate the creation of a statewide sustainable trail network through public-private partnerships.

The Dover/Kent County Metropolitan Planning Organization (MPO) includes a number of relevant recommendations in their Regional Bike Plan, several of which directly address existing County parks and the St. Jones Greenway. Some of the recommendations include:

- ❖ DE 10 - DE 10 is the main road connecting Dover AFB with the towns of Camden and Wyoming. There are several schools along or just off the route. A key hazard is the bridge over the St. Jones River; there are no shoulders on westbound side, and no bike facilities and heavy, fast-moving auto traffic in both directions. Eastbound the shoulder should be marked as a bike lane, westbound, lane width should be reallocated to add a bike lane. Ideally, the speed limit on the bridge should also be reduced. A continuous bike lane should be added in each direction between US 113 and US 13 (2.9 miles).
- ❖ Sorghum Mill Road - Sorghum Mill Road is part of the St. Jones Greenway trail system. The causeway connects from the Hunn Family Farm House to the Lebanon Landing Boat Ramp. From there a pedestrian bridge crosses over the St. Jones River to Old Lebanon Road. This road can be used by bicycles for approximately 2 miles until the path is blocked by the DAFB housing project. Sorghum Mill Road continues west to the small town of Lebanon and continues to multiple housing developments (Locust Grove, Eagle Meadow, and Quail Landing) as well as an elementary school, a middle school and the John S. Charlton facility. Between DE 10 and the Hunn Property (1.65 miles), the causeway needs to be widened and a bike lane added.
- ❖ Silver Lake/St. Jones Connector - This 1.7 mile connector would create a link through the center of the state's capitol from the Silver Lake trail (.5 mi) and the St. Jones trail (2.66 miles) with very few road crossings. At the south end, the trail would parallel US 13 to the St. Jones River and cross under the highway at the bridge. The route requires construction of 2 bike bridges across the St. Jones River, one just south of Division St and the other near US 13.
- ❖ Camden to Dover Trail - The Camden to Dover Trail (4 to 4.5 miles depending on route), would connect from Camden-Wyoming Ave to North St in Dover. A completed trail along this corridor would connect schools, parks and transit facilities. The trail would take advantage of preexisting trail connections (Brecknock Park to Fifer Middle School) and the proposed Dover Western Connector. The Trail would also provide connections to other on road facilities, and an additional connection to the proposed SR 10 trail would help to provide a loop.
- ❖ Route 10 Trail - The Route 10 trail from the St. Jones Greenway to US 13 would be 2.7 miles if on one side of the road or 5.4 miles if trails are put on both sides of Route 10. A separate bicycle bridge over the St. Jones may be required. A recommended addition to this trail would be a connection to Caesar Rodney High School.

- ❖ Smyrna - Big Oak Park Connection - The trail (2.20 miles) would provide a connection between Smyrna and Big Oak County Park east of SR 1, reducing the need to travel by car to use the park.

The opportunity exists for the Departments of Community Service and Planning Services to partner with these and other agencies and nongovernmental organizations to improve the County's parks and expand access to them.

Staffing

The Department of Community Services currently employs 6 park maintenance workers, a park facilities specialist, and a park maintenance supervisor to help construct improvements and maintain the County's existing parks. The Department recommends that 2 maintenance workers be available for each developed park (Big Oak, Brecknock, Tidbury, and Browns Branch). Because Brecknock Park and Kesselring are adjacent the existing staff can take on some of the responsibilities at Kesselring although an additional staff person will likely be required as the park reaches build out.

Development of additional significant capital improvements (e.g. indoor recreation center or swimming pool) will also require additional staff. An indoor recreation center could require up to three full-time positions and seven part-time positions to adequately staff the facility. The Department is recommending the addition of a facility manager, a recreation supervisor, a clerical position, a part-time custodian, part time recreation assistants, and part time front desk employees for evenings and weekends. The staffing requirements for a swimming pool are likely to be equal or greater. Ultimately, any such significant capital improvement will carry continual long term maintenance and staffing costs that must be accounted for in the project development process.

The 1991 Parks and Recreation Plan recommended the use of volunteers for helping at parks as well as assisting with fundraising. Developing a Friends of the Park organization similar to Friends of the Library could cultivate a sense of community ownership of the parks as well as offset some of the staffing costs for the County.

The National Recreation and Parks Association offers opportunities for certification of various parks and recreation professionals including:

1. Certified Park and Recreation Professional
2. Certified Park and Recreation Executive
3. Aquatic Facility Operator
4. Certified Playground Safety Inspector

Having one or more of the Parks and Recreation staff certified offers professional development opportunities through continuing education and provides an even greater level of

professionalism to the County's program as a whole. Certainly the cost of applying for and maintaining any certification must be measured against the benefit to the organization.

The opportunity also exists to have the Department as a whole accredited through the Commission for Accreditation of Park and Recreation Agencies. Accreditation provides a measure of the overall quality of operation, management, and service to the community and can prove beneficial when marketing the County. Based on the National Accreditation Standards, many of the requirements are already in place within the County and the Community Services and Planning Services Departments can coordinate in completing the initial application.

Conclusions

1. Kent County has made great strides over the past twenty years in providing its citizens with outstanding parks and recreation facilities. As the County continues to grow and its demographics change, existing parks must be maintained and updated, new parks developed, and additional land acquired. The overall public benefits of parks and recreation amenities such as public health, natural resource protection, and economic development at least matches the costs of acquisition, construction, and maintenance. However, there are limited resources and the County must capitalize on existing facilities and carefully prioritize new capital projects.
2. Due to limited resources, the County must strengthen existing and cultivate new partnerships including municipalities, schools, local universities and colleges, and civic organizations. Partnerships with other agencies might also prove fruitful in pursuing some of the more significant capital projects such as an indoor recreation center or swimming pool.
3. All of the County's parks and recreation programs offer public health, environmental, social, and economic benefits to the community and make Kent County an attractive place to live, work, and play.
4. The County developed three parks as recommended in the 1991 Plan and acquired additional land in the Hunn and Kesselring Properties. All of the developed parks are heavily used by the community and without question are assets to the community. The County's commitment to developing excellent park facilities will continue with the development of Kesselring, continuation of the St. Jones Greenway, development of the Hunn Property and, rehabilitation of the Hunn and Brecknock manor houses.
5. According to a recent survey and poll of the Parks and Recreation Commission indicate that developing walking/jogging paths, water features such as a pool or spray park, playgrounds, and developing an indoor recreation center appear to be high community priorities. Providing access to historic sites, additional picnic areas, hard surface courts for basketball and tennis, and athletic fields appear to be moderate priorities. In

Formatted: Indent: Left: 18 pt

addition, access to County parks and connection to pedestrian facilities near them should be a priority.

6. Given the limited scope of the two recent surveys, it is imperative that the County undertake a substantial outreach effort to truly gauge the community's parks and recreation priorities
7. Additional park land should be considered in the central part of the County to serve the recently developed area around Magnolia. Location near developed areas and access to any new park land particularly for pedestrians and bicyclists should be a primary consideration.
8. Opportunities for community engagement exist which has the benefit of building additional public support for the County's parks and recreation programs and recruiting potential volunteers to assist with both fundraising and maintenance for the park lands. Particularly in difficult economic times, community outreach and partnerships with both public and private organizations is imperative. Fundraising opportunities must be explored.
9. In order to ensure, that the County is meeting the needs of our citizens, a follow-up survey, preferably online, should be developed.

Recommendations

With those conclusions in mind, the following actions are recommended over the next several years within the Department:

1. Conduct a series of public outreach meetings throughout the County to get feedback on direction and priorities of parks and recreation. Prior to the public outreach meetings, develop list of future amenities and the associated capital and operating costs for current and future projects. Public response will provide some guidance in allocating funds within the capital budget. All of the projects listed below should be included for discussion in the outreach effort.
2. Kesselring Property
 - (a) Develop master plan
 - (b) Construct walking/jogging path connected to Brecknock Park
 - (c) Construction of parking areas
 - (d) Construction of Pavilions
 - (e) Construction of Playground
 - (f) Addition of a maintenance worker
3. St. Jones Greenway
 - (a) Update Greenway Plan

- (b) Initiate community outreach effort
- (c) Acquire Easements
- (d) Prioritize construction projects
- (e) Create fund within Capital Budget
- (f) Develop partnerships and explore fundraising opportunities with additional organizations:
 - (i) Kent County Tourism
 - (ii) Dover/Kent County MPO
 - (iii) DelDOT
 - (iv) DNREC
 - (v) Delaware Nature Conservancy

4. Historic Resources

- (a) Develop a Memorandum of Agreement with the Friends of Historic Camden for assessment, rehabilitation, and future use of the Brecknock Manor House.
- (b) Coordinate with Delaware State University review the existing Memorandum of Understanding and prioritize further study and capital improvements based upon the conditions assessment for Wildcat Manor.
- (c) Prioritize implementation of improvements to each house
- (d) Develop partnerships and explore fundraising opportunities with additional organizations:
 - (i) Friends of Historic Camden
 - (ii) Preservation Delaware
 - (iii) State Historic Preservation Office
 - (iv) University of Delaware
 - (v) Kent County Tourism
- (e) Explore fundraising opportunities
- (f) Develop an historic resources guidebook
- (g) Create fund within Capital Budget

Formatted: Justified, Indent: Left: 36 pt, Space After: 0 pt

5. Community Engagement

- (a) Make Parks and Recreation more visible and enlist the support of the community (“gift catalog”, volunteer identification and recognition program, memorial tree dedication program, “adopt a park” program,);
- (b) Develop a Friends of the Park program similar to the Friends of the Library organization.
- (c) With the economic development benefits of a superior parks and recreation program, staff should coordinate with the County’s newly created Economic Development Office to advertise the parks and recreation opportunities in Kent County as part of the overall economic development effort.

Formatted: Indent: Left: 18 pt

6. Recreation Programming

- (a) Continue to monitor interest in individual programs and incorporate enough variety to accommodate all segments of the population.

- (b) Continue building and maintaining relationships with organizations that host programs, particularly the school districts.
 - (c) An indoor recreation facility should also incorporate enough space to house recreation programs as well as league and individual play.
7. Staffing
 - (a) Explore possibility of certification and continuing education program.
 - (b) Explore accreditation of the parks and recreation program as a whole.
 8. Continue to coordinate with DeIDOT and the Dover/Kent County MPO to ensure transportation projects related to the St. Jones Greenway as well as pedestrian and bicycle access to County parks remain a priority.
 9. Evaluate this plan annually and update every five years.

Potential Projects

Formatted: Heading 2, Justified

These are substantial long term capital improvements that cannot be accomplished all at one time but should be prioritized and examined further for eventual inclusion in the County's capital budget.

1. Indoor Recreation Center
 - (a) Determine location
 - (b) Contract with a consultant to develop a master plan for the facility
 - (c) Funding Options
 - (i) Capital Budget (possible delay in construction or use of reserve funds)
 - (ii) Bond Issue
 - (iii) Fundraising
2. Spray Park
 - (a) Identify location
 - (b) Dedicated item within the Capital Budget
 - (c) RFP for design and construction
3. Additional Parkland Magnolia Area and/or Expansion of Existing Parks
 - (a) Create fund within Capital Budget
 - (b) Establish a Park Endowment Fund for land acquisition supported by donations and fundraisers
4. Swimming Pool
 - (a) Estimate potential development and maintenance costs
 - (b) Identify potential partners such as municipalities
 - (c) Identify potential locations within the County
 - (d) Dedicated item within the Capital Budget

Formatted: Font: Calibri

Implementation Schedule and Budget

Action	Cost Estimate
<i>Year 1</i>	
Public Outreach Effort	
Indoor Recreation Center (a) Determine location (b) Contract with a consultant to develop a master plan for the facility (c) Dedicated fund in Capital Budget	\$50,000
Kesselring Property (a) Develop master plan	Can be included as part of master plan for indoor recreation center if Kesselring location is chosen
St. Jones Greenway (a) Update Greenway Plan (b) Secure Easements (c) Prioritize construction projects	
<i>Year 2</i>	
Kesselring – Construction of walking/jogging path/wetland boardwalk	\$250,000 (1/2 grant)
<i>Year 3</i>	
Spray Park (a) Dedicated item within the Capital Budget (b) Identify location	\$10,000 to \$15,000 per year
<i>Long Term Considerations</i>	
Spray Park – construction	\$250,000
Indoor Recreation Center – Construction	\$6 to \$9 million
Indoor Recreation Center – maintenance	\$22,000 based on Pitts Center utility costs.

costs	
Additional Parkland in Magnolia Area (a) Dedicated item within the Capital Budget	\$10,000 to \$15,000 per year as available
St. Jones Greenway (a) Dedicated item within the Capital Budget	\$10,000 to \$15,000 per year as available
Brecknock Manor House (a) Dedicated item within the Capital Budget	\$10,000 per year as available
Staffing	
(a) Maintenance Worker at Kesselring (b) Recreation Facility Manager (c) Recreation Program Supervisor I (d) Clerical Position for Recreation Center (e) 4 Part-time positions for Recreation Center	Grade 5 - \$42,421 Grade 10 - \$57,464 Grade 10 - \$57,464 Grade 3 - \$36,633 \$12,000 to \$16,000 per position

Appendix A: Park Facilities

Neighborhood		
Capitol Park Open Space	Carlisle Village Open Space	Constitution Park
Crossgates Park	Kenton Municipal Park Mayfair	Leipsic Municipal Playground
Little Creek Park	Park	Memorial Park
NE Front Street Rec. Area, Milford	New Street Park, Dover	North Bowers Beach
Town of Bowers Beach Park	School Lane Park, Cheswold	Community
	Wyoming Park	Turner Drive Park, Dover
Community		
Camden-Wyoming Little League	Clayton Community Park Bowers	Andrews Lake & Access Area
Blairs Pond & Access Area	Beach Access Area & Boat Ramp	Courseys Pond & Access Area
Derby Pond & Access Area First	Duck Creek Impoundment Area	Felton Little League Park
State BMX Facility City of Milford	Fortney Tract State Fish and Wildlife Area	Garrisons Lake & Access Area
Goat Island Nature Area	Green Branch Trail	Griffith Lake & Access Area
Haven Lake & Access Area	Heritage Park	James Vaughn Memorial Park
Johnson Memorial Park	Lake Como Park	Lebanon Landing Boat Ramp
Legislative Green	Little Creek Wildlife Area	Masseys Pond & Access Area
McCauleys Pond Wildlife Area	McGinnis Pond & Access Area	Milford Youth Sports Complex
Moores Lake & Access Area	Mud Mill Pond & Access Area	North Dover Athletic Complex
Port Mahon Access & Wildlife Area	Port Mahon Open Space Natural Area	Scottons Landing Access and Wildlife Area
Silver Lake, Milford	Smyrna Municipal Park	St. Jones River Access State Fish and Wildlife Park
Lewis Farm – CDSA	Tidbury Park	Big Oak Park
Garrisons Lake Golf Course	Tub Mill Pond & Access	Brecknock Park
Schutte Park City of Dover Park	Urban Tract Wildlife Area	Browns Branch Park
Kesselring Property		Silver Lake Recreation Area
County-wide		
St. Jones Reserve	Blackbird State Forest	Blackiston Wildlife Area
John Dickinson Plantation	Isaacs Branch Greenway Path	Hunn Property
Norman G. Wilder Wildlife Area	Milford Neck Natural Area	Killens Pond
Woodland Beach Fish and Wildlife Area	Ted Harvey Conservation Area	St. Jones River Greenway
Taber Forest Delaware Forest	State Fish and Wildlife Area	Sunshine Builders Tract
Service State Forest	Bombay Hook National Wildlife Refuge	Wildlife Area
Lands		Murderkill River, Nature Preserve

Source: 2008 Statewide Comprehensive Outdoor Recreation Plan, DNREC Parks and Recreation

Appendix B: Kent County Survey

1=Desperate Need; 2 = High Need; 3 = Average Need; 4 = Low Need; 5 = Not Needed

How would you rate the need for park facilities in Kent County?

Zip Code	Age	Outdoor Swimming Pool/Spray Park	Indoor Recreation Center	Walking/Hiking Fitness Trails	Access to Historic Buildings	Athletic Fields	Tennis & Basket-ball Courts	Playgrounds	Passive Recreation	Pavilions/Picnic Areas	Parking Lots	Amphi-theater
19709	25-34	1	1	3	3	2	2	1	3	3	4	3
19904	35-44	3	1	3	2	2	3	1	3	2	3	1
19977	35-44	1	1	3	3	4	4	1	2	2	5	4
19952	35-44	1	1	3	4	2	2	1	1	3	4	5
19962	35-44	1	1	1	5	1	1	1	1	3	3	2
19943	35-44	1	1	1	3	3	2	2	3	2	3	3
19934	45-54	-	1	1	1	2	2	2	2	1	2	2
19904	45-54	4	1	1	1	3	3	2	3	2	-	1
19943	45-54	1	1	3	3	1	3	3	3	1	1	1
19952	55+	1	1	1	1	1	1	1	1	1	1	1
19946	55+	2	1	1	2	2	1	1	1	1	2	3
19962	55+	1	1	1	-	1	1	1	1	1	-	1
19901	55+	1	1	2	5	5	2	2	5	5	2	1
19946	55+	2	1	2	3	1	1	1	1	1	1	3
19901	55+	4	1	4	5	5	5	2	2	-	5	2
19904	55+	1	1	3	1	1	1	1	3	3	2	1
19904	55+	3	1	1	3	4	4	4	4	3	4	5
19904	18-24	2	2	2	1	3	3	4	3	2	5	3

Zip Code	Age	Outdoor Swimming Pool/Spray Park	Indoor Recreation Center	Walking/Hiking Fitness Trails	Access to Historic Buildings	Athletic Fields	Tennis & Basket-ball Courts	Playgrounds	Passive Recreation	Pavilions/Picnic Areas	Parking Lots	Amphi-theater
19952	18-24	2	2	2	3	1	1	2	2	2	3	3
19904	18-24	2	2	2	3	4	4	2	2	3	2	1
-	25-34	2	2	1	2	3	3	2	3	2	4	4
19962	25-34	2	2	2	4	4	3	3	3	3	4	4
19938	25-34	2	2	2	5	3	4	4	4	4	4	5
19962	35-44	3	2	2	4	4	4	4	4	4	2	4
19901	35-44	3	2	2	2	2	3	2	2	2	3	3
19943	35-44	2	2	4	3	3	3	3	4	4	4	4
19904	35-44	2	2	2	2	2	2	2	2	2	2	2
19904	45-54	1	2	2	4	3	2	2	4	3	3	1
19954	45-54	1	2	3	5	5	4	4	5	4	5	2
19904	45-54	1	2	2	1	3	3	2	2	2	1	1
19964	45-54	3	2	1	3	3	3	2	3	3	3	2
19977	55+	2	2	2	2	2	2	2	2	2	2	2
19901	55+	3	2	3	2	1	1	1	1	3	2	2
19904	55+	2	2	1	4	3	3	2	4	3	4	5
19934	55+	3	2	2	2	2	2	2	2	2	2	3
19934	55+	1	2	1	1	2	2	1	2	2	3	3
19977	18-24	1	3	3	3	3	3	3	3	3	3	3
19904	35-44	1	3	1	4	3	3	2	3	2	4	4
19938	35-	1	3	3	3	3	3	2	3	3	3	2

Zip Code	Age	Outdoor Swimming Pool/Spray Park	Indoor Recreation Center	Walking/Hiking Fitness Trails	Access to Historic Buildings	Athletic Fields	Tennis & Basket-ball Courts	Playgrounds	Passive Recreation	Pavilions/Picnic Areas	Parking Lots	Amphi-theater
19946	35-44	5	5	3	2	2	2	2	3	5	3	1
19904	35-44	5	5	3	3	5	1	3	2	3	3	4
19946	35-44	5	5	2	5	5	1	5	1	5	5	5
19952	45-54	5	5	5	5	5	5	5	5	5	5	5
-	55+	5	5	1	4	4	4	5	4	4	3	1
19904	55+	5	5	5	5	5	5	5	5	5	5	5
19901	55+	4	5	3	3	3	5	3	3	3	3	5
-	-	3	5	2	4	1	1	1	1	1	1	1
19943	35-44	-	-	3	5	3	-	3	-	3	-	-
19934	35-44	-	-	-	-	-	-	-	-	-	-	-
19953	35-44	2	-	1	2	-	-	1	-	1	-	1
19901	45-54	-	-	2	-	-	-	-	2	-	-	-
-	55+	-	-	-	-	-	-	-	-	-	-	-
19934	55+	-	-	-	-	-	-	-	-	-	-	-
-	55+	-	-	-	-	-	-	-	-	-	-	-
-	55+	-	-	-	-	-	-	-	-	-	-	-
-	-	-	-	2	-	-	2	-	-	-	-	-

Kent County Parks and Recreation is developing plans for an indoor recreation center. What types of indoor activities do you think there is a need for?

Zip Code	Age	Group Fitness/Aerobics	Free Weight/Cardio Machines	Volleyball/Tennis/Badminton	Basket-ball Courts	Indoor Lacrosse/Field Hockey	Indoor Soccer/Football Field	Rental Space for Events/Parties	Walking/Running Track	Golf Instruction/Driving Range	Indoor Skate-board/Youth	Individual Sports Training	Indoor Swimming Pool	Rock Climbing/Adventure Sports Area	Indoor Batting Cages
19709	25-34	1	1	1	1	3	3	3	1	2	1	2	1	2	2
19904	35-44	2	2	2	3	3	2	2	1	2	1	1	2	2	3
19977	35-44	2	2	3	3	4	4	2	2	3	3	3	1	2	3
19952	35-44	1	1	3	1	4	4	3	1	5	3	4	1	2	5
19962	35-44	1	1	1	1	3	1	2	1	2	2	2	1	1	1
19943	35-44	2	2	1	2	1	1	1	1	3	2	2	1	3	3
19934	45-54	1	2	2	1	2	2	3	1	1	2	3	3	1	3
19904	45-54	2	2	3	3	2	2	2	2	4	2	3	2	2	3
19943	45-54	3	3	3	3	3	3	2	3	3	2	3	1	1	1
19952	55+	1	1	1	1	1	1	1	1	1	1	1	1	1	1
19946	55+	1	1	2	2	3	2	1	1	3	4	1	1	2	2
19962	55+	3	3	2	2	2	2	2	1	3	2	4	1	5	-
19901	55+	2	2	2	2	5	5	2	2	5	5	5	1	5	5
19946	55+	3	3	3	1	3	3	1	2	4	4	2	1	3	3
19901	55+	2	2	5	5	5	5	2	5	5	5	5	1	5	5
19904	55+	1	5	3	3	3	3	1	1	3	1	5	1	1	1
19904	55+	1	3	3	3	4	4	4	2	3	4	4	1	4	3
19904	18-24	1	2	3	2	3	4	2	1	4	3	4	1	2	2
19952	18-24	1	-	2	4	4	3	3	1	2	5	3	1	2	3
19904	18-24	1	1	3	3	3	3	2	3	3	3	3	3	1	2
-	25-34	2	2	2	2	3	3	3	2	4	1	3	2	2	2
19962	25-34	2	2	3	2	3	3	1	1	3	1	3	1	3	3
19938	25-34	2	3	4	4	4	2	2	2	4	2	4	1	3	3
19962	35-44	4	4	4	4	4	1	4	1	1	3	4	4	1	3
19901	35-44	3	3	3	3	3	3	3	2	4	2	3	3	3	3
19943	35-44	3	4	3	3	2	2	2	2	3	4	4	2	3	3
19904	35-44	2	2	2	2	3	2	2	2	3	2	2	2	2	2
19904	45-54	1	1	3	3	4	4	1	1	5	2	4	2	2	2
19954	45-54	3	4	3	4	4	4	5	2	5	1	4	1	3	2
19904	45-54	2	2	2	3	2	2	1	1	2	1	1	1	1	2

Zip Code	Age	Group Fitness/Aerobics	Free Weight/Cardio Machines	Volleyball/Tennis/Badminton	Basket-ball Courts	Indoor Lacrosse/Field Hockey	Indoor Soccer/Football Field	Rental Space for Events/Parties	Walking/Running Track	Golf Instruction/Driving Range	Indoor Skate-board/Youth	Individual Sports Training	Indoor Swimming Pool	Rock Climbing/Adventure Sports Area	Indoor Batting Cages
19964	45-54	3	2	2	2	4	4	3	2	4	3	3	3	2	3
19977	55+	2	2	2	2	2	2	2	2	2	2	2	2	2	2
19901	55+	1	1	2	1	2	2	1	1	2	2	3	2	3	2
19904	55+	1	1	3	3	4	4	2	2	5	5	4	2	5	3
19934	55+	2	3	3	3	3	3	3	3	3	3	3	3	4	3
19934	55+	3	3	3	3	3	3	3	3	3	3	3	3	3	3
19977	18-24	2	2	3	3	3	3	3	2	4	3	4	1	4	3
19904	35-44	2	2	2	2	3	3	2	1	3	3	2	1	3	3
19938	35-44	2	2		3	3	3	3	4	4	2	4	1	4	4
19934	35-44	5	3	2	3	1	5	2	1	2	1	1	1	2	5
19953	35-44	3	3	3	3	3	3	5	4	3	3	3	4	4	4
19901	45-54	3	3	3	3	3	3	3	3	3	3	3	3	3	3
19980	45-54	2	3	3	3	3	3	2	2	3	1	3	1	3	3
19943	45-54	1	1	3	3	4	4	3	1	5	3	4	3	4	5
19934	45-54	4	4	4	4	4	4	2	3	4	3	3	2	4	4
19934	45-54	3	3	1	1	4	4	4	2	4	2	3	2	2	2
19904	55+	3	4	4	4	5	5	4	3	4	4	5	5	5	5
19901	55+	3	3	4	4	4	4	3	3	3	4	3	3	3	3
19938	55+	2	2	4	5	5	5	3	3	4	4	4	4	5	5
19943	55+	2	1	2	3	3	4	3	2	5	3	4	2	5	4
19946	55+	2	2	2	3	3	3	3	2	2	3	2	3	2	2
19946	35-44	2	1	4	3	4	3	2	2	3	3	3	2	2	3
19904	35-44	2	2	1	1	4	3	5	1	5	4	4	1	2	4
19934	45-54	4	4	1	1	1	1	1	4		5		5	3	1
19904	45-54	3	3	3	3	3	3	3	5	5	3	5	5	5	1
19934	55+	4	4	3	5	3	5	3	2	2	3	3	3	3	3
19904	55+	2	1	1	4	3	3	2	1	1	3	3	3	5	2
19943	55+	2	2	3	3	3	3	3	2	3	3	3	3	3	3
19904	25-34	2	3	4	5	5	5	5	1	5	5	5	1	2	5
19977	25-34	5	5	5	5	5	5	5	5	5	5	5	5	5	5
19946	35-44	5	5	5	5	5	5	5	5	5	5	5	5	5	5
19904	35-44	3	3	3	2	4	3	4	2	3	3	3	2	1	1
19946	35-44	5	5	1	4	5	5	5	2	5	3	5	2	5	4

Zip Code	Age	Fitness Classes	Arts and Crafts Classes	Bus Trips	Summer Day Camps	Youth Sport Leagues	Tot Programs (<5)	Youth Programs (5-17)	Music/Theatrical Performances in Parks	Senior Programs	Adult Specialty Programs	Special Events
19964	45-54	3	3	3	3	2	3	3	2	3	3	2
19977	55+	2	2	2	2	2	2	2	2	2	2	2
19901	55+	1	1	1	1	1	1	1	1	2	2	2
19904	55+	1	4	2	4	4	5	3	4	4	2	2
19934	55+	3	3	3	3	3	3	3	3	2	3	3
19934	55+	3	3	3	1	1	1	1	2	2	2	3
19977	18-24	4	2	4	2	2	1	1	3	5	2	3
19904	35-44	1	4	4	3	2	2	2	2	3	3	3
19938	35-44	2	3	2	3	3	3	3	1	3	3	-
19934	35-44	4	3	5	1	1	1	1	1	5	3	4
19953	35-44	4	4	3	4	3	5	4	2	2	2	5
19901	45-54	3	3	3	3	3	3	3	3	3	3	3
19980	45-54	2	3	1	4	4	4	4	1	1	1	4
19943	45-54	1	3	4	4	2	4	2	2	1	1	2
19934	45-54	3	3	3	3	3	3	3	2	2	3	3
19934	45-54	3	3	4	3	2	5	3	2	5	3	3
19904	55+	-	4	5	5	5	5	5	4	4	4	5
19901	55+	3	3	2	3	2	3	3	3	2	2	2
19938	55+	2	4	3	5	5	5	5	3	2	2	5
19943	55+	2	1	3	2	4	2	2	3	1	2	3
19946	55+	2	2	2	5	5	5	5	2	2	2	5
19946	35-44	2	3	4	4	3	4	3	3	3	4	3
19904	35-44	2	2	3	2	3	3	3	2	2	2	2
19934	45-54	4	3	3	-	-	-	5	4	4	-	4
19904	45-54	3	3	4	4	3	5	1	3	5	3	3
19934	55+	3	3	3	5	5	5	5	-	2	1	3
19904	55+	3	3	3	3	3	3	2	3	3	3	-
19943	55+	2	3	2	3	3	3	3	3	-	3	3
19904	25-34	1	5	3	5	5	5	5	5	5	5	5
19977	25-34	5	5	5	5	5	5	5	5	5	5	5
19946	35-44	5	5	3	2	2	2	2	2	3	3	4
19904	35-44	4	2	5	5	5	5	5	1	5	2	3
19946	35-44	3	2	4	5	3	3	2	4	2	2	4

Zip Code	Age	Fitness Classes	Arts and Crafts Classes	Bus Trips	Summer Day Camps	Youth Sport Leagues	Tot Programs (<5)	Youth Programs (5-17)	Music/Theatrical Performances in Parks	Senior Programs	Adult Specialty Programs	Special Events
19952	45-54	5	5	5	5	5	5	5	5	5	5	5
-	55+	5	3	1	5	5	5	5	4	5	5	4
19904	55+	5	5	5	5	5	5	5	5	5	5	5
19901	55+	3	5	3	5	5	5	5	3	4	4	3
-	-	5	5	5	5	5	5	5	5	5	5	5
19943	35-44	3	3	3	2	3	2	3	3	3	3	3
19934	35-44	-	-	-	-	-	-	-	-	-	-	-
19953	35-44	-	1	-	2	-	-	-	1	-	-	1
19901	45-54	2	2	2	-	-	-	-	2	-	2	-
-	55+	-	-	2	2	-	2	2	-	2	-	2
19934	55+	-	-	-	-	-	-	-	-	-	2	-
-	55+	-	-	4	-	-	-	-	-	4	-	-
-	55+	-	-	-	-	-	-	-	-	-	-	-
		-	2	-	2	-	-	-	2	-	-	-
-	-	-	-	2	-	-	2	-	-	-	-	-