

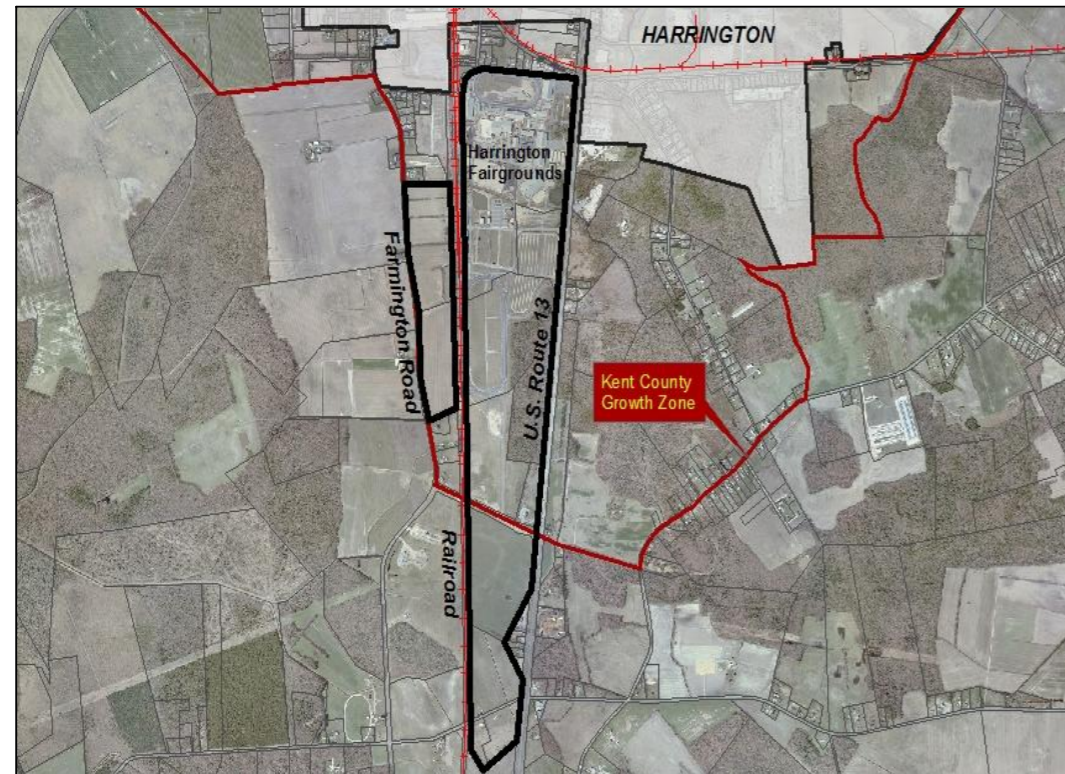


# KENT COUNTY DIVISION OF PLANNING SERVICES

## South Harrington Industrial Area

AS DESIGNATED BY THE 2007 COMPREHENSIVE PLAN

### 2007 AERIAL MAP



#### AREA CHARACTERISTICS:

Area located south of the town of Harrington. Surrounding this industrial area is mainly residential and agricultural ground. There are some small commercial uses that exist to the east of this area along Rt. 13 and to the north in the town of Harrington. Immediate access to Rt. 13 on the east and rail access to the west.

Area currently has the Delaware State Fairgrounds (IL zoning). The remainder of the areas is zoned IL, IG, and AR.

#### LANDS IDENTIFIED:

-A 42 acre vacant property zoned IL on south side of Tower Hill Rd. in private ownership.

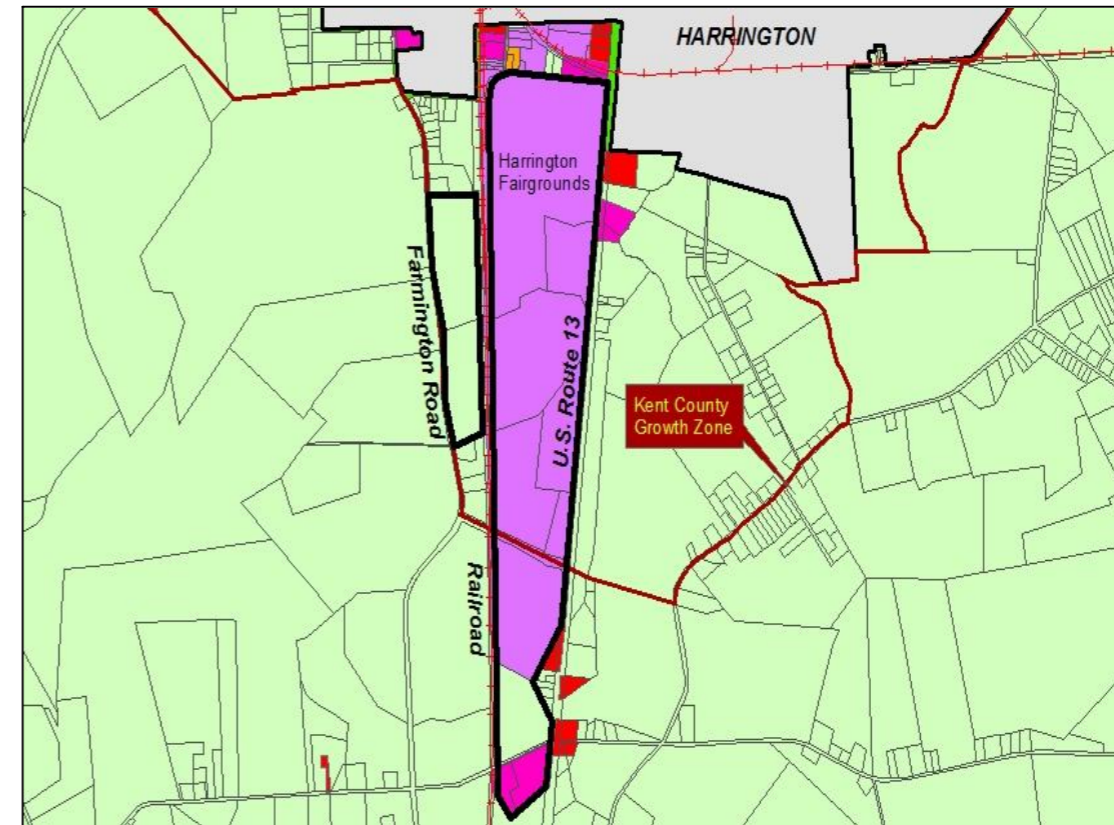
-A 23 acre vacant property zoned AR on the north side of Hammondtown Rd. currently in same ownership as, and adjacent to, the above property.

-Two residentially improved properties, 14 acres combined, zoned IG on the south side of Hammondtown Rd. in common private ownership.

AR property would need zoning change to either IG or IL.



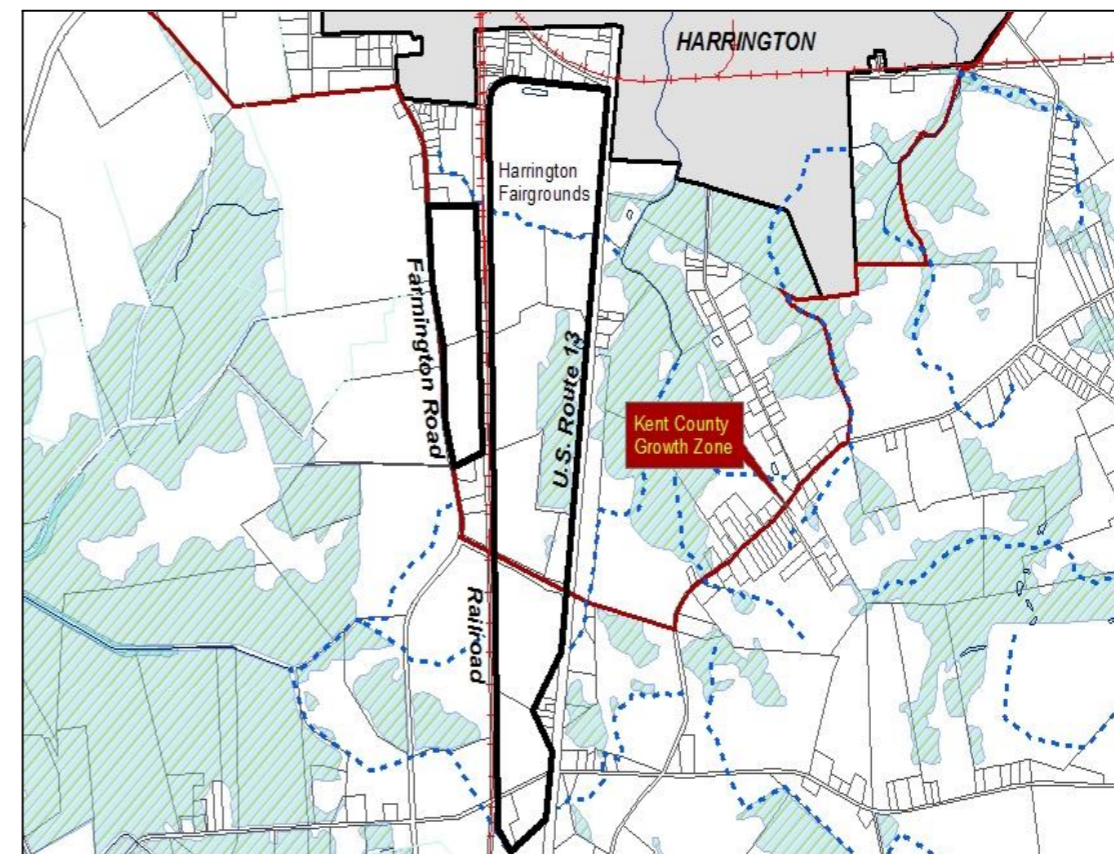
For additional Planning procedures please contact The Kent County Department of Planning Services at 302-744-2471



## SOUTH HARRINGTON INDUSTRIAL AREA

### ZONING CLASSIFICATIONS

- AC
- AR
- RS1
- RMH
- BN
- BG
- IL
- IG



### ENVIRONMENTAL FEATURES MAP

#### Legend

- Potential Industrial Areas
- Parcel Lines
- Railroad
- Roads
- Water Bodies
- Municipalities
- Wetlands
- Floodplain